

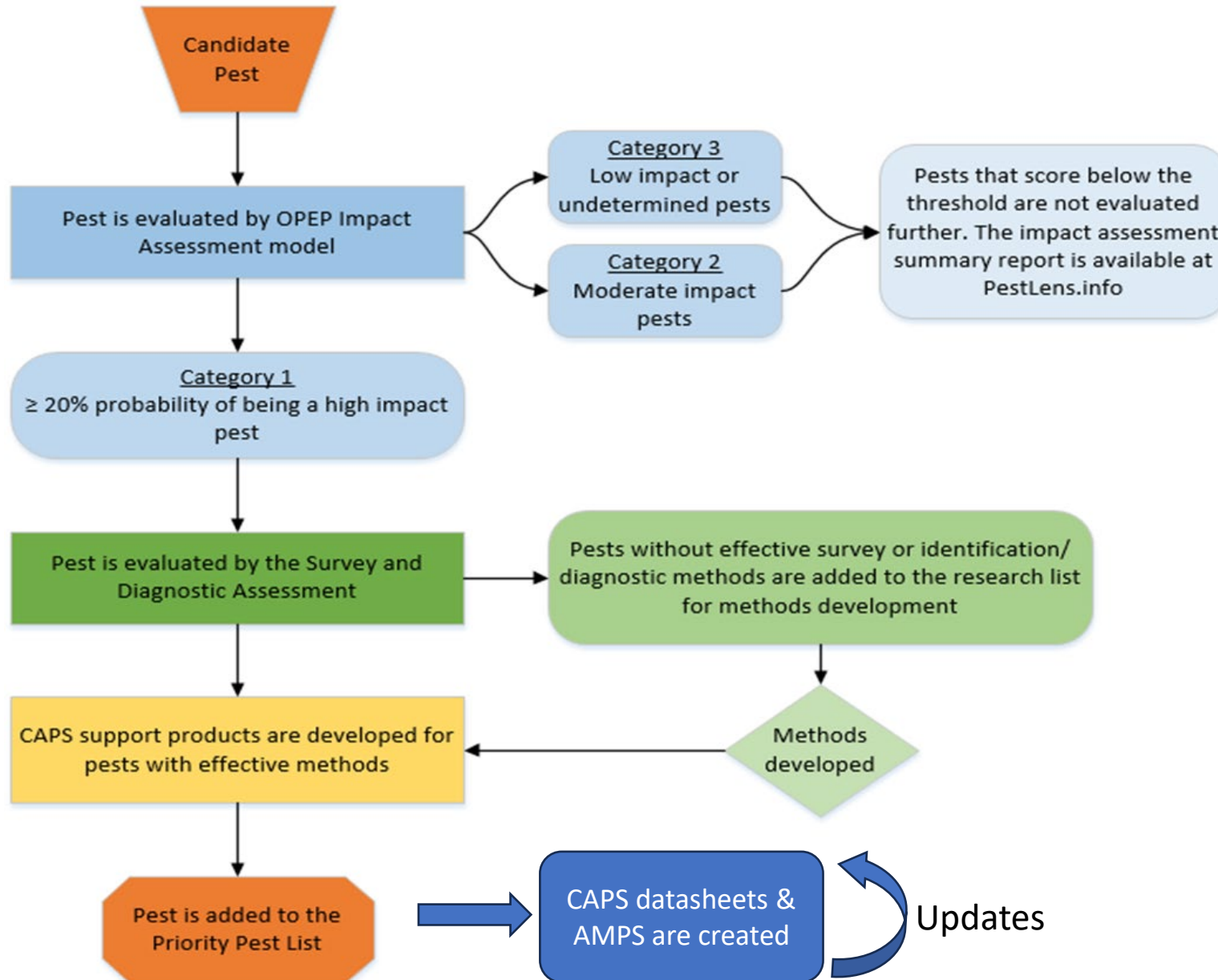


National CAPS Committee Annual Meeting FY26 Planning and Discussion S&T updates

Leah Granke, PPQ S&T, PD CFWG
Colin Funaro, PPQ S&T, CAPS Support

contact: stcaps@usda.gov
Feb 11, 2025

How to Submit a NPP candidate



- Candidate pests come from:
 - PPQ scientists
 - Colleagues overseas
 - Scanning the literature
 - Scanning online: [PestLens](https://www.aphis.usda.gov/pestlens)
 - YOU!!!

We can only assess pests that we hear about

Submit pest suggestions to stcaps@usda.gov

Proposed Additions to NPPL

Common Name: European pear sucker

Scientific Name: *Cacopsylla pyri*

Host: pear

blotches & streaks of pear fruit that result in downgrading, defoliation, reduced fruit size, & fruit drops

Proposed Survey Method: sticky trap, beat sheeting

Identification Method: morphological

OPEP rating: High (1B)

How pest spreads: add next time



European pear sucker summer-form adult
(Source: NIAB East Malling, UK)

Common Name: Witches' broom of lime

Scientific Name: *Ca. Phytoplasma aurantifolia*

Hosts: key lime, grapefruit, some other citrus

witches' broom, reduced flowering and fruiting, & general decline of the tree with susceptible trees dying in 3-5 years. Some host trees may remain asymptomatic for long periods of time.

Proposed Survey Method: Collect leaf tissue

Identification Method: molecular

OPEP rating: High (1A)



J.M. Bove, INRA Centre de Recherches de Bordeaux, Bugwood.org

Common Name: Red leaf blotch of soy

Scientific Name: *Coniothyrium glycines*

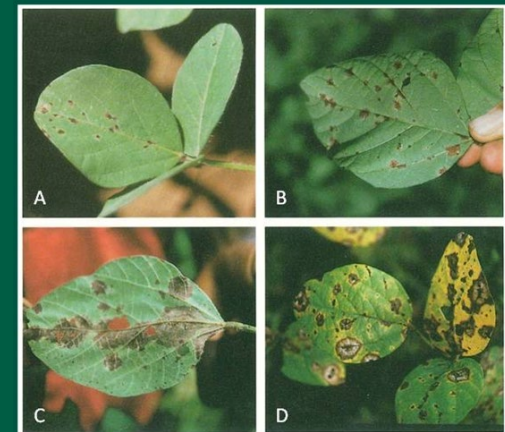
Host: soybean

red lesions on young soybean leaves, stems, petioles, and pods. Lesions expand into irregular blotches that may coalesce. Premature leaf drop, reduced plant growth, and reduction in seed size & weight are other symptoms.

Proposed Survey Method: Visual survey & collection of plant parts

Identification Method: molecular

OPEP rating: Mod (1D)



Red leaf blotch symptoms on leaves (Source: Glen Hartman)

Terrestrial Snail & Slug Surveys

Current NPPL

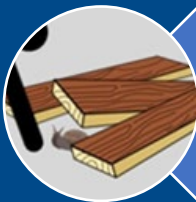
- 12 snails & slugs
- Datasheets & AMPS are species specific
 - BUT all are visual surveys and specimens are sent to the National Malacology lab for ID

	Pest Scientific Name	Pest Common Name
Approved Methods	<i>Cerņuella virgata</i>	Maritime garden snail
Approved Methods	<i>Cochlicella</i> spp.	Cochlicellid snails
Approved Methods	<i>Belocaulus</i> spp.	Leatherleaf slugs
Approved Methods	<i>Cerņuella</i> spp.	Hygromiid snails
Approved Methods	<i>Colosius</i> spp.	Leatherleaf slugs
Approved Methods	<i>Laevicaulis</i> spp.	Leatherleaf slugs
Approved Methods	<i>Lissachatina fulica</i>	Giant African snail
Approved Methods	<i>Meghimatium pictum</i>	Chinese slug
Approved Methods	<i>Monacha</i> spp.	Hygromiid snails
Approved Methods	<i>Sarasinula</i> spp.	Leatherleaf slugs
Approved Methods	<i>Semperula</i> spp.	Leatherleaf slugs
Approved Methods	<i>Veronicella</i> spp.	Leatherleaf slugs

Future NPPL

- 3 AMPS for surveying high-risk locations
 - Species targeted will be the same
 - Visual surveys for all

Terrestrial Snails & Slugs at:



ports of entry, material warehouses, and rail yards (where containers are moving)



greenhouses, nurseries, produce & cut-flower importer warehouses & markets



incident-related sites (sites with previous known incursions)

Future Target Taxa

- More inclusive list of priority pests
- Chosen by experts in Mollusk CFWG

Giant African Snails

- *L. fulica*, *A. achatina*, *A. marginata*, *L. aurora*, *L. flammea*

Acusta spp.

Arion spp.

- *A. ater ater*, *A. ater rufus*, *A. ater ruber*, *A. vulgaris*, potential hybrids

Cathaica fasciola

Cerņuella spp.

Cochlicella spp.

Monacha spp.

- *M. ocellata*, *M. cartusiana*, others?

Parmarion spp.

- *P. martensi*, *P. intermedius*

Theba pisana

Veronicellidae

- *L. alte*, *Sarasinula* spp., *Semperula* spp., *Veronicella* spp., *Leidyula* spp., *B. angustipes*





National CAPS Committee Annual Meeting

PPQ Pest Detection CFWG update

S&T updates

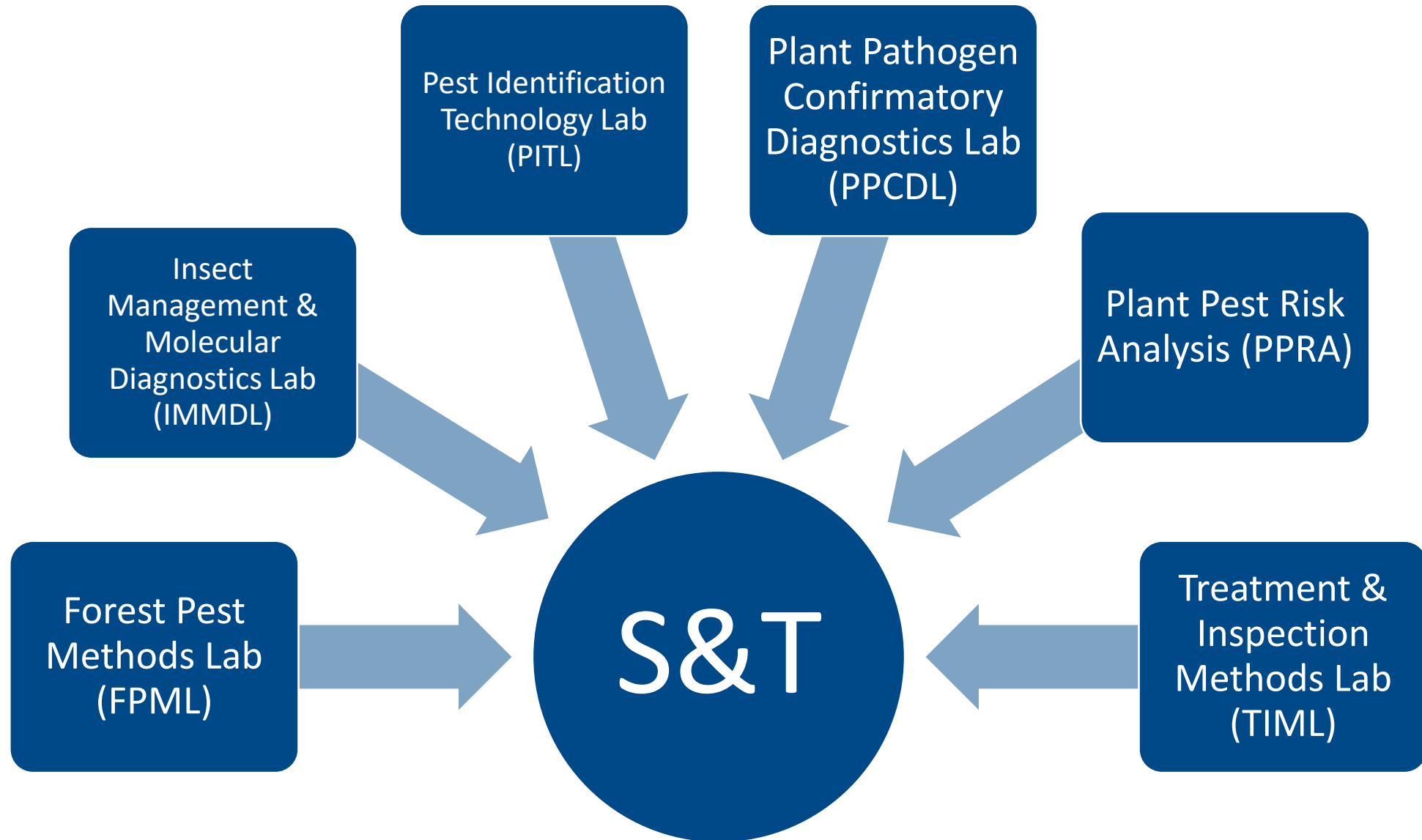
Colin Funaro, PPQ S&T, CAPS Support
Leah Granke, PPQ S&T, PD CFWG

contact: stcaps@usda.gov

Feb 12, 2025



Science & Technology Overview



History of Cotton Jassid in US

- 2023 detected in Puerto Rico
- 2023 OPEP completed
- 2024 detected in USVI
- 2024 survey & diagnostic completed, added to NPPL
- 2024 detected in Florida

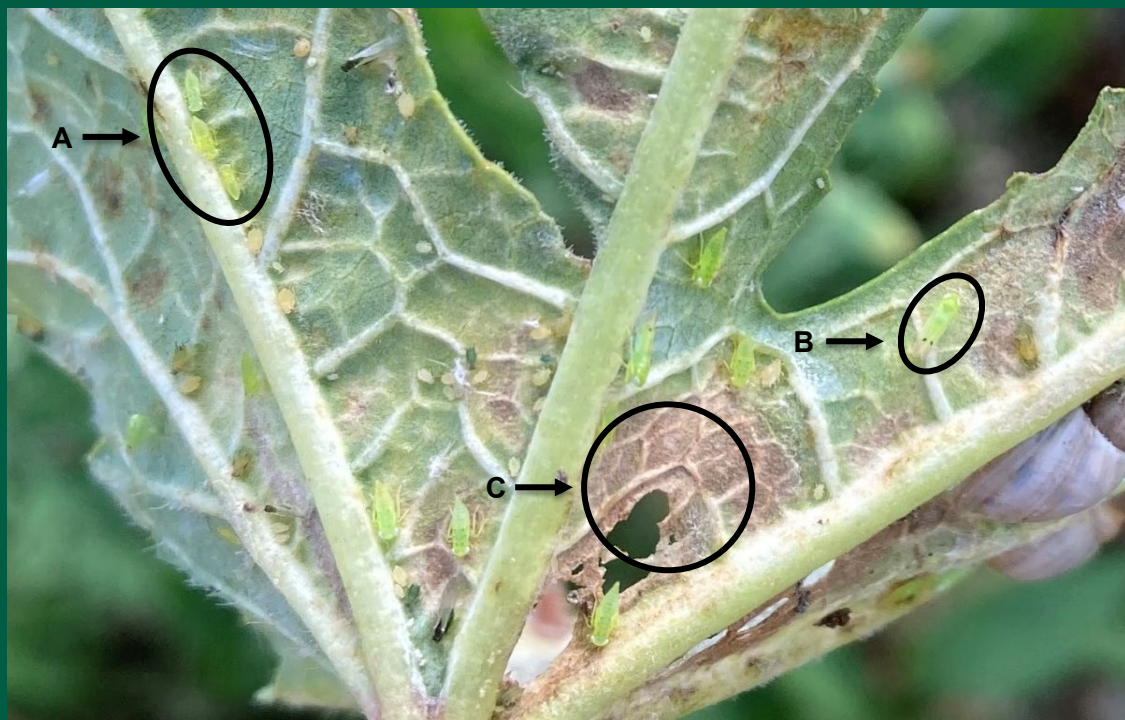


Photo courtesy of Amy Roda

2025 Datasheet & AMPS

Approved survey method

- The CAPS-approved survey methods are
1. Visual surveys (sweep net sampling, beat sampling, or manual collection)
 2. Trapping with yellow or green sticky traps



Photos courtesy of Daphne Zapsas and Amy Roda