



# Survey Supply Procurement Program (SSPP)

Waleska Ramirez

National Policy Manager (SSPP & IPHIS-SSPP)

[Waleska.V.Ramirez@usda.gov](mailto:Waleska.V.Ramirez@usda.gov)

# SSPP – Trivia Questions

**What is the primary purpose and goal of the Plant Protection and Quarantine (PPQ) Survey Supply Procurement Program (SSPP)?**

- A. To train new staff in pest identification
- B. To conduct laboratory analysis of invasive pests
- C. To ensure timely access to high-quality, compliant, and cost-effective supplies support PPQ's mission-critical plant health activities
- D. To create public outreach programs about plant health

# SSPP – Trivia Questions

**How does the PPQ Survey Supply Procurement Program (SSPP) work to keep costs low while maintaining high-quality pest detection supplies?**

- A. By purchasing only from local vendors
- B. By delaying orders until prices drop
- C. By reducing the number of traps and lures used in surveys
- D. By using bulk purchasing, strategic sourcing, and market analysis

# SSPP – Trivia Questions

## **How PPQ Survey Supply Procurement Program (SSPP) implements quality assurance?**

- A. Creating new pest detection methods for field staff according to what is available
- B. Developing and reviewing traps and lures Statement of Work (SOW) standards to ensure products meet current PPQ requirements
- C. SSPP just works with whatever is available in the market
- D. Inspecting randomly found options

# Survey Supply Procurement Program (SSPP)

## 2025 IPHIS-SSPP Catalog (MAB and FPML)

- Managed 200 products – IPHIS - SSPP catalog
- 171 products purchased commercially, stored at Moore Airbase (MAB) warehouse
- 29 lure types manufactured by PPQ Forest Pest Methods Laboratory (FPML)

## FY 2025 Orders (MAB and FPML)

- 464 orders
- 137 different products
- 53 states/territories
- 3,387,875 items shipped



# Cost Optimization: Annual cost savings, contract utilization rate.

- Strive on optimizing cost with the use of multiyear contracts
  - PPQ saves over 4 million dollars yearly, by using multiyear contracts
- Re-soliciting contracted products and expanding contract utilization with additional products.
- Relevant tracking how much product each program needs/uses.
  - PPQ continues to develop better ways to identify and track costs for each program.
    - IPHIS – SSPP replacement platform will allow us to improve tracking of supply orders by funding source.

# Additional Advantages of Contract Utilization

- Ensures consistent, reliable quality of supplies across programs
- Reduces administrative burden by minimizing one-time purchases
- Improves supplier performance through clear expectations and standards
- Strengthens compliance with PPQ procurement requirements
- Streamlines ordering, delivery, and inventory planning
- Supports faster response during urgent or high-priority survey needs

# Quality Assurance – Ensuring High-Quality Survey Supplies

- Develop and review traps and lures Statements of Work (SOWs) to ensure all procured products meet current established PPQ standards.
- Maintain high-quality, compliant supplies that support successful survey operations.
- Ensures traps and lures perform reliably in early pest detection.
- Reduces supplier issues and costly returns.
- Supports mission-critical operations with standardized, high-quality materials.

# Quality Assurance

- Expiration dates extensions
  - MAB storage optimal storage conditions
  - Before disposal all expired lots with relevant quantities
    - Tested for potency and efficacy (S&T)
    - Expiration extension per testing results
- Rejected lots
  - Lots nonconforming per SOW
    - Rejected at vendor's expense
      - 3 Lots of lures rejected (over 100,000 units total)
    - Corrective action at vendor's expense
      - 1 traps order packing, corrective action
      - 1 traps damaged during shipping, replaced

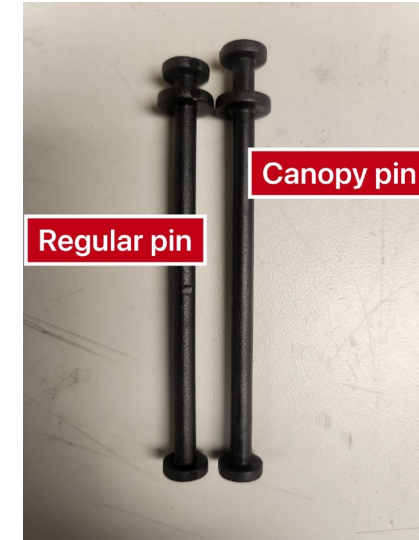


# Quality Assurance

- Reported deficiencies
  - Defective Lure package/plastic wrap reported
    - Warehouse inventory checked
    - Field feedback requested – resulted in isolated defect
    - Reported to vendor thru contracting officer
  - Pins/Pegs incompatible with black multi-funnel traps
    - Pins with different lengths within the same brand
    - Pins for more than one brand inventory (Chemtica & Synergy)
    - Separated products by brand
    - Ordered canopy & funnel pegs/pins from current vendor/brand
  - Translucent Cross Vane Panel Trap – Reported 2025 NCC meeting shorter than expected lifespan.
    - New product purchased samples sent for research/feedback
- **SSPP values your feedback!**



Monochamol 04/2025



Black Multi-funnel  
06/2025

# Supply ordering periods & Inventory

- **Period 1:**
  - Fall (September - November)
    - Supporting CAPS and PPQ program surveys
- **Period 2:**
  - Supporting PPA 7721 Goal 1S surveys and any residual supply ordering needs
  - Winter (typically February & March)
  - Note FY 2026 TBD, aligned PPA 7721 spending plan publication
- **FY 2026 inventory:**
  - To be confirmed mid April. Orders will pause for around 3 weeks.
  - Effort to ship orders in advance. Orders might be impacted during inventory



# Product ordering reminders

## Guidance provided on ordering products and adjusting quantities

- Specific products were updated in IPHIS-SSPP catalog
- To reflect how are they packed, providing additional guidance when ordering the products.
  - I.E.: This product is packed in multiples of 20. Please order in multiples of 20, round up your desired quantity to the nearest multiple of 20 i.e. if you need 45 units, you should order 60 units. Please be aware of these changes before the placing orders during the open period.
- This guidance can be found at the CAPS website [Survey Supplies Best Practices Document](#) (Appendix 1)



# Supplies Shortages Explained

- FY 2025
  - Delayed budget appropriations
  - Government Shutdown
  - DRP's 1 & 2
  - Higher number of retirements
  - Multiple changes in procurement process
  - Limited procurement support staff
  - Reduced purchase card holders
  - International suppliers chain impact with new processes and tariffs (G. Acetol)



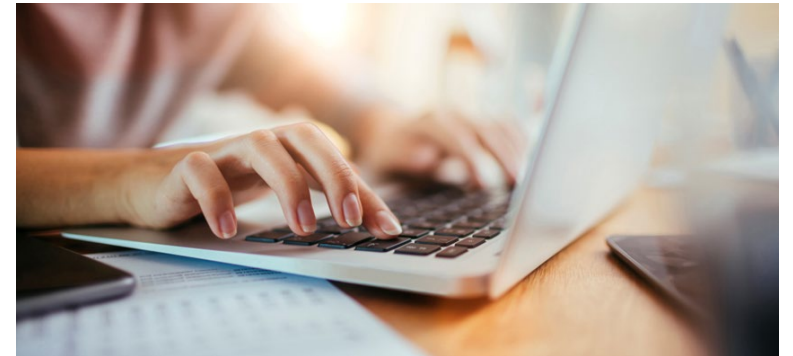
# Supplies Outlook

- FY 2026
  - Delayed budget appropriations
  - PPQ updated budget protocol for 1 program
    - No appropriated funds dependent
    - Allowed to initiate earlier procurement this year
  - Identified alternate product, (G. Acetol) resulted in alternate vendor, USA sourced
  - Products with low balance per projected needs
    - procurement in progress



# Integrated Plant Health Information System (IPHIS)- Survey Supply Procurement Program (SSPP)

- IPHIS-SSPP module scheduled for full retirement within a year.
- Transition of SSPP module functions from IPHIS to a new platform
  - Maintain all essential functions of the system
  - Improvements: User Friendly, Intuitive, Smart
  - PPQ to improve tracking of supply orders by funding source.
  - Platform: Service Now
  - Ongoing effort, tentative deployment 2027
    - Prior to deployment
      - Socialization of the platform
      - Introduction and training



# SSPP Program best practices

## Ordering Expectations:

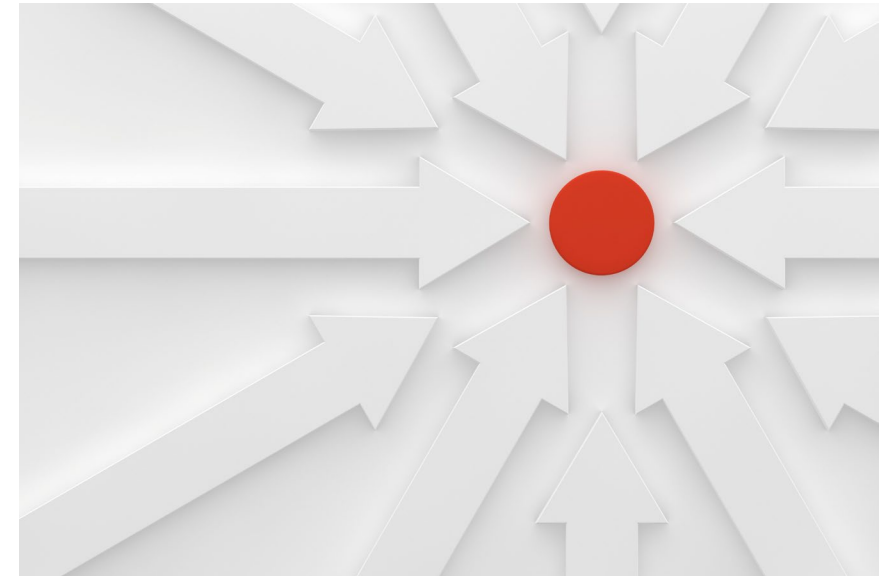
- Order supplies based on quantities in the current year's approved survey work plans.
- Request only supplies that match approved program methods.
- Review all orders carefully with the Pest Survey Specialist.
- Place orders during the designated ordering period; exceptions only for new detections or quarantines.



# SSPP program collaborator best practices

## Avoid These:

- Do not order more than what is needed per the current year's approved survey work plans.
- Only place orders for PPQ approve/funded surveys.
- Do not create a local stockpile of supplies.
- Avoid ordering outside the ordering period (except for new detections or quarantines).





# Questions?

Grateful of your time and attention!

