



**Annual National Cooperative Agricultural Pest Survey (CAPS)
Committee (NCC) Meeting
February 2-3, 2016
Phoenix, Arizona
Supplemental Information**



Annual National CAPS Committee Meeting
February 2 – 3, 2016
PPQ CPHST Phoenix Lab & PPQ AZ SPHD Office
Phoenix, Arizona
Agenda



Tuesday, February 2, 2015 (8:00 am – 5:00 pm) – PPQ AZ SPHD Office

- Welcome, NCC Introductions
- State and PPQ Welcome and Overview
Jerry Levitt – AZ SPHD and John Caravetta – AZ SPRO
- CPHST Welcome and Overview
Rick Zink, Director Phoenix Lab
- Meeting Overview
Why we are here and what we need to talk about
- NCC Bylaws review
Representation and Terms
FO Realignment
- 2015 NCC Meeting review
- CAPS Processes
- CAPS Performance in 2015
Performance Measures, Metrics, and Funding
- Funding Update
FY16 Funding
Outlook for FY17
Survey Support for Exports Offer
- Farm Bill – FBMT
FY16 Update
Going into FY17
- Cooperative Agreements
Combining Work Plans and Agreements - Options
USDA Grantor for CAPS and Farm Bill



- Purdue Update
 - Survey Summary Form
 - Change Request Process
 - Habitat/Environment Fields
 - CAPS and Farm Bill Accountability Reports
 - Reporting Tools
 - Host Code / Higher Taxon Level
 - Survey Methods Reconciliation
 - Trap & Lure NAPIS Data Entry Fields
 - Sample and Visual Surveys
- CAPS Program Discussion
 - Pest Surveillance Proposal
 - Logistics and Implementation
 - Possible Processes and Protocols
- National CAPS Meeting Update & Planning
 - Status
 - Alternate Opportunities
 - Discussion of:
 - Format
 - Topics
 - Presentations

Wednesday, February 3, 2015 (8:00 am – 5:00 pm) - PPQ AZ SPHD Office

- Follow up from the previous day
- CAPS 2017 Survey Guidelines
 - Review of the current Guidelines
 - New Additions and Possible Changes
 - Appendix J-3 / Survey Summary Form – Updates
 - Approved Methods
 - Work Plan Deadlines
 - Reporting
- CPHST CAPS Support
- Pest Lists
 - Pest Prioritization Process
 - Changes to the Pest Lists



- Survey Manuals Update
 - Reformat / Update old manuals
 - New Survey Manuals (2016 and 2017)
 - Changes to Pest Lists
- Pest Prioritization Model Revision Project Update
 - Background/ Overview:
 - Project Timeline / Next steps
 - Plant Pathogens / Arthropods
- Research Needs
 - General Lures and Pheromones
- New Mapping Strategy
 - Background: DDPR, SAFARIS, GIS & Geospatial Tools
 - Future Strategy
- CAPS Recognition – John Bowers
- Additional Topics and Discussion – John Bowers
- Review of Action Items and Responsibility
- Summary, Closing and Last Thoughts

NCC Bylaws

Purpose of the Bylaws

To establish rules of operation for the National Cooperative Agricultural Pest Survey (CAPS) Committee (NCC).

CAPS Mission

The mission of the Cooperative Agricultural Pest Survey (CAPS) program is to provide a survey profile of exotic plant pests in the United States deemed to be of regulatory significance to the United States Department of Agriculture (USDA), Animal and Plant Health Inspection Service (APHIS), Plant Protection and Quarantine (PPQ), State Departments of Agriculture, tribal governments, and other cooperators through early detection and surveillance activities by:

- Confirming the presence or absence of environmentally and/or economically harmful plant pests that impact agriculture or the environment, and that have potential to be of phytosanitary significance; and
- Establishing and maintaining a comprehensive network of cooperators and stakeholders to facilitate our mission and to safeguard our American plant resources.

NCC Purpose

The NCC represents CAPS cooperators at the national and state level and provides guidance for the Pest Detection program.

The NCC duties include:

- Providing national guidance for policy, procedures, budgets, and performance tracking of CAPS initiatives, including pest detection within specific pest eradication and management programs where overlap occurs with CAPS priority pests.
- Finalizing the annual PPQ National CAPS Guidelines including a list of exotic plant pests for survey priority, and communicating standardized survey methodologies.
- Communicating pest detection objectives, policy, and plans to the stakeholder constituency which the NCC member represents.
- Monitoring the roles and responsibilities of the State CAPS committees, including the duties of the State Plant Health Directors (SPHD), State Plant Regulatory Officials (SPRO), Pest Survey Specialists (PSS), and State Survey Coordinators (SSC) in implementing the CAPS program.
- Facilitating agreement between PPQ and cooperators on the process for developing pest survey lists for consideration at the state and national level, including commodity-based surveys.
- Identifying high-impact outreach efforts on an annual basis, especially to leverage resources and interest in pest detection.
- Evaluating the fairness and transparency in funding and accountability of cooperators' use of CAPS funds.

- Identifying training needs in support of CAPS (survey and regulatory policy and procedures, data management, and communications).
- Acting as an advisory committee for all information technology systems, databases, and websites in support of Pest Detection and CAPS.

NCC Membership

The CAPS program relies to a great degree on close cooperation between PPQ and state departments of agriculture. It is appropriate for the NCC members to be appointed accordingly.

NCC Member	Role and Responsibility*
PPQ- National Survey Coordinator (NSC), Plant Health Programs, Policy Management (PM)	National PPQ responsibility to provide leadership, management, and coordination to implement and oversee the CAPS program; chairs and organizes meetings and conference calls, and delivers information in a timely manner.
PPQ- National Operations Manager (NOM) for Pest Detection, Field Operations (FO)	Administration of CAPS in Field Operations, including guidance to States, and assures there is program accountability, fairness and transparency among states nationally; provides frequent and direct advice to the National Survey Coordinator.
PPQ- Program Leader for CAPS Support, Center for Plant Health Science and Technology (CPHST), Science & Technology (S&T)	Provide pest lists, prepare and present relevant scientific analyses, recommend survey methodologies, provide commodity-base pest survey guidelines, prepare risk maps and supporting documentation to inform decisions on pest survey, and to submit proposals for scientific endeavors in support of CAPS.
PPQ – Farm Bill Section 10007 Program Representative	Provide Farm Bill Section 10007 perspective, strategy, and focus, and insures that CAPS and Farm Bill surveys and projects are linked and share common guidance; responsible for communicating NCC and CAPS topics, issues, and guidance with the Farm Bill Management Team, goal leads, and stakeholders.
PPQ- State Plant Health Director (SPHD), Field Operations (FO); two representatives	Provide unique PPQ state-level perspective on specific issues regarding CAPS policy, procedures, and initiatives; responsible for communicating NCC and CAPS topics and issues with the national SPHD constituency.

NCC Member	Role and Responsibility*
National Plant Board (NPB)- State Plant Regulatory Official (SPRO), Eastern, Southern, Central, and Western Plant Boards; four representatives	Provide state-level perspective unique to SPROs regarding CAPS policy, procedures, and initiatives; represent their respective Plant Board, and responsible for communicating NCC and CAPS topics and issues.
PPQ- Pest Survey Specialist (PSS), Field Operations (FO); two representatives	Provide unique PPQ field-level perspective on specific issues regarding CAPS policy, procedures, and initiatives, particularly the feasibility of implementation in the field; responsible for communicating NCC and CAPS topics and issues with the national PSS constituency.
State Dept. Ag.- State Survey Coordinator (SSC), Eastern, Southern, Central, and Western Plant Board States; four representatives	Provide state, field-level perspective for states in their respective Plant Board region on specific issues of concern to the states, particularly the feasibility of implementing new survey policy, procedures, or initiatives; responsible for communicating NCC and CAPS topics and issues with their constituency.

*The current *Cooperative Agricultural Pest Survey (CAPS) National Guidelines*, contains a comprehensive list of roles and responsibilities of various positions in the CAPS program.

The Pest Detection Management Team (PDMT)

The Pest Detection Management Team (PDMT) consists of individuals occupying the following positions on the NCC. Their participation on the PDMT is contingent on their position as described below. The PDMT will convene frequent discussions as needed.

- National Survey Coordinator in Policy Management , PDEP
- National Operations Manager for Pest Detection
- CPHST Program leader for CAPS Support in Science & Technology

NCC Membership Selection

- The National Survey Coordinator, the National Operations Manager for Pest Detection, and the CPHST, Program Leader for CAPS Support serve on the NCC as long as they remain in their position.
- The Farm Bill representative will be chosen by the Farm Bill Management Team (FBMT) in consultation with the NSC, and approved by the PDMT. They will serve on the NCC as long as they remain in their position with the Farm Bill Program, or that the FBMT decides to change representation.

- The NCC approved the addition of this position to the NCC on February 12, 2013, as a permanent member to coincide with the expanded scope of surveys conducted through Farm Bill funding, and the tight linkage of CAPS survey guidance and methodology in Farm Bill surveys.
- The four National Plant Board representatives will be appointed by their respective Regional Plant Board President in consultation with the NSC, and approved by the PDMT. They will serve a three-year term unless renewed.
- The two State Plant Health Directors will be nominated by the SPHDs nationally in consultation with the National Operations Manager for Pest Detection, with support of the Executive Director of Field Operations and the respective Associate Executive Director (AED), and approved by the PDMT. They will serve a three-year term unless renewed.
- The two Pest Survey Specialists will be nominated by the PSSs nationally in consultation with the National Operations Manager for Pest Detection, with support of the SPHD of the individual's State, the Executive Director of Field Operations, and the appropriate Associate Executive Director (AED), and approved by the PDMT. They will serve a three-year term unless renewed.
- The four State Survey Coordinators will be nominated by the SSCs in that Plant Board Region in consultation with the National Operations Manager for Pest Detection, with approval by the individual's supervisor, support of the SPRO of the individual's State, concurrence of the respective Regional Plant Board President, and approved by the PDMT. They will serve a three-year term unless renewed.

The NCC values diversity in member representation, and has determined that the positions mentioned above justify the composition and needs of the CAPS community. Given the diversity of states in terms of geography, size, agriculture, environment, risk, and how they are managed, it is important for the CAPS program to receive guidance on topics and issues from these many perspectives. The CAPS program cannot run efficiently without considering the potential effectiveness of program policies in the states. One rule for member selection overrides all others: No two members on the NCC can be from the same state. This insures that the core constituencies of the CAPS community are represented by 12 states on the NCC. Selection of new members will depend on the present representation on the NCC. Other factors that may be considered are regional location (north, south, east, west), size (large, small), and pest risk factors (ports, pathways), among others.

The committee aims for continuity and frequent turnover is discouraged; however, adjustments will be allowed to accommodate changes as necessary. NCC members may be re-appointed up to two consecutive terms (not to exceed six years). In an effort to avoid concurrent term expirations, NCC members will serve on a staggered schedule as often as possible. Term years run from January 1 through December 31. The term schedule is posted on a website(s) accessible to the NCC. If a member is unable to

complete their term, another will be selected based on the process described above to fill the remaining time of that term. The NSC will notify the Executive Director of Field Operations, Regional Plant Board President, PDMT, and others as appropriate before November 1 of the expiration of a member's term, and convey the need to either re-appoint the member or select a new representative to the NCC.

Beginning April 1, 2013, the State Plant Health Director and Pest Survey Specialist serving on the NCC for the longer period of time will be primarily responsible for communications within the national constituency. If the term of this individual is renewed for an additional 3 years, then the communication responsibility will switch, and the other individual will assume the responsibility nationally. This will allow a more equitable sharing of responsibilities while maintaining the diversity of input to the NCC. Otherwise, coordination of communication responsibilities will be determined between the two individuals.

Invited Participant

Both non-government and government parties will be invited to provide their unique perspectives on specific issues, on an ad hoc basis, as approved by the NCC. Many of these individuals will be invited to participate in conference calls and meetings throughout the year, depending upon the agenda. Some of the invited participants may include university cooperators, PPQ Information Technology (IT) staff, National Agricultural Pest Information System (NAPIS) user services, The Nature Conservancy, National Invasive Species Council (NISC), USDA National Institute of Food and Agriculture (NIFA), US Forest Service, APHIS Native American Working Group representative, Native American tribal representatives, and industry organizations. Invited participants do not serve for a specific term, but only as long as projects or tasks requiring their unique contribution is needed. Once the issue has been addressed or project(s) completed, the invited participant will no longer be obligated to participate in NCC discussions.

Any government entity (i.e. federal, state, local, and/or tribal government officials) may be invited to participate in discussions with an agency of the Federal government without requiring deliberations to be conducted according to the Federal Advisory Committee Act (FACA). Non-government employees will not be asked to engage in discussions that could be interpreted to provide "consensus advice recommendations or advice" to the federal government. Their role will be to provide information and perspective on specific issues. The views of non-NCC members will be considered along with all other information and views available. Therefore, the NCC will not need to conduct meetings under FACA procedures.

Committee Meetings

An annual NCC meeting will be held during the latter half of January to review and evaluate the CAPS program, prioritize pest surveys, and discuss issues and topics of interest to the CAPS community. Conference calls will be convened monthly, with the agenda, date and time, ad hoc participation, and toll free numbers provided in advance.

Minutes to all meetings will be posted on the CAPS Resource and Collaboration web site, and will be available to the CAPS community.

The NCC will strive for consensus. If an impasse is reached, the PDMT may try to resolve the issue via separate discussion with the NPB President, the Executive Directors of Policy Management, Field Operations, and/or Science & Technology, the PPQ Leadership Team, or other individuals or organizations, and then communicate the decision to the NCC. If an immediate decision must be made at the time the NCC is convened, the National Survey Coordinator will break the impasse by making the final decision, with follow up discussions with the PDMT to review the decision.

An important obligation for all NCC members is communication about CAPS activities with their respective constituency. The NCC member must hear their constituents concerns and represent their interests. It is recommended that each representative contact their constituency prior to each monthly NCC conference call or NCC meeting and ask for input on critical issues as necessary. Ideas and issues should be brought to the attention of the NCC for discussion, and meeting minutes, action items, resolutions, and decisions will be communicated back to the CAPS community through the NCC member's constituency. It also is important to communicate upward, and keep PPQ management and the National and Regional Plant Board Directors aware of CAPS policies, topics, issues, and activities.

Financial Support

Travel expenses to the annual NCC meetings will be budgeted for APHIS personnel. Non-APHIS participants may request travel support through the PPQ-National Plant Board cooperative agreement.

Rules of Conduct

The NCC strives for open, frank, constructive dialogue in its deliberations, and will conduct meetings in a manner that provides an opportunity for all members to be heard. The NCC will strive for consensus on all issues. They will foster an environment of trust and confidentiality among its members. They will not personalize issues. If issues are sensitive, they will be identified as such and the NCC will handle them as agreed to by the NCC. If an NCC member has disagreement with a particular issue, they will voice their opinion with the NCC where it will be addressed. If the issue is not resolved to their satisfaction, they may either remove themselves from deliberations on that issue or they may ask to be removed from the NCC. However, the NCC expects the confidentiality of its deliberations to be honored as a professional courtesy even if the member is removed from discussion on an issue or is removed from the NCC. The NSC, with concurrence of the PDMT, President of the National Plant Board, Executive Directors of Policy Management, Field Operations, and/or Science & Technology, may seek to replace NCC members if they fail to meet their obligations.

Maintenance of the Bylaws

Any questions, concerns, or suggestions to improve these Bylaws may be addressed to John Bowers, the National Survey Coordinator, located at the following address:

USDA-APHIS-PPQ, Pest Detection & Emergency Programs, 4700 River Road, Unit 26, Riverdale, MD 20737-1236, (301) 851-2087, John.Bowers@aphis.usda.gov

National Cooperative Agricultural Pest Survey (CAPS) Committee (NCC) - Term Limits & Rotations

Name	Affiliation	Title	Position on committee	Term	2010	2011	2012	2013	2014	2015	2016	2017	2018	
John Bowers	PPQ PHP	PPQ National Survey Coordinator	NCC - Chairperson	Permanent	X	X	X	X	X	X	X	X	X	
Brian Kopper	PPQ FO	PPQ Pest Detection - Operations	NCC	Permanent	X	X	X	X	X	X	X	X	X	
Richard Zink	PPQ CPHST	CAPS Support	NCC	Permanent	X	X	X	X	X	X	X	X	X	
Kristian Rondeau	PPQ FBM	PPQ Farm Bill Section 10007 Program	NCC	Permanent	X	X	X	X	X	X	X	X	X	Present Year
Terry Bourgoin	PPQ FO	State Plant Health Director	NCC	3-year	X	X	X	X	X	X	X	X	X	2nd term
Joel Bard	PPQ FO	State Plant Health Director	NCC	3-year	X	X	X	X	X	X	X	X	X	2nd term
Julie Van Meter	State	Central Plant Board - SPRO	NCC	3-year	X	X	X	X	X	X	X	X	X	2nd term
Piera Siegert	State	Eastern Plant Board - SPRO	NCC	3-year	X	X	X	X	X	X	X	X	X	2nd term
Tyson Emery	State	Southern Plant Board - SPRO	NCC	3-year	X	X	X	X	X	X	X	X	X	1st Term
Brad Lewis	State	Western Plant Board - SPRO	NCC	3-year	X	X	X	X	X	X	X	X	X	2nd term
Yolisa Ishibashi	PPQ FO	Pest Survey Specialist	NCC	3-year	X	X	X	X	X	X	X	X	X	1st Term
Mark Hitchcox	PPQ FO	Pest Survey Specialist	NCC	3-year	X	X	X	X	X	X	X	X	X	1st Term
Dale Anderson	State	Central Plant Board - SSC	NCC	3-year	X	X	X	X	X	X	X	X	X	1st Term
Ruth Welliver	State	Eastern Plant Board - SSC	NCC	3-year	X	X	X	X	X	X	X	X	X	1st Term
Sherry Aultman	State	Southern Plant Board - SSC	NCC	3-year	X	X	X	X	X	X	X	X	X	2nd term
Ian Foley	State	Western Plant Board - SSC	NCC	3-year	X	X	X	X	X	X	X	X	X	Last 2 years of Helmuth's term
vacant	PPQ PHP	Director, Pest Detection & Emereg. Prog.	ad hoc	Permanent	X	X	X	X	X	X	X	X	X	

Year terms are from January 1 - December 31
All terms begin January 1, 2008
In order to establish a staggered rotation, some terms initially were less than 3 years

X

= permanent member

X

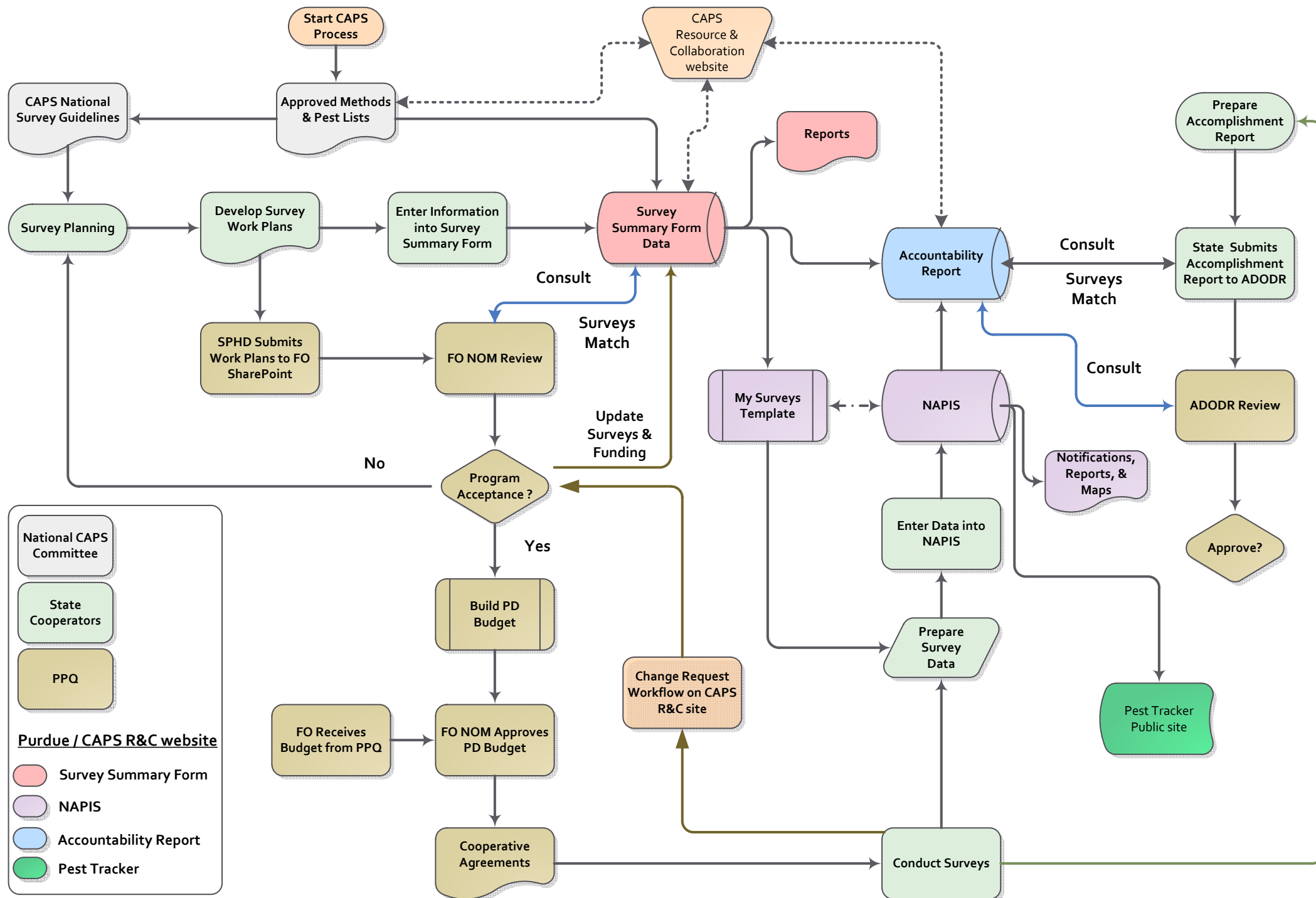
= first year in a 3 yr term

X

= second year in a 3 year term

X

= third year in a 3 year term



**CAPS Surveys and Funding
FY13 - FY16**

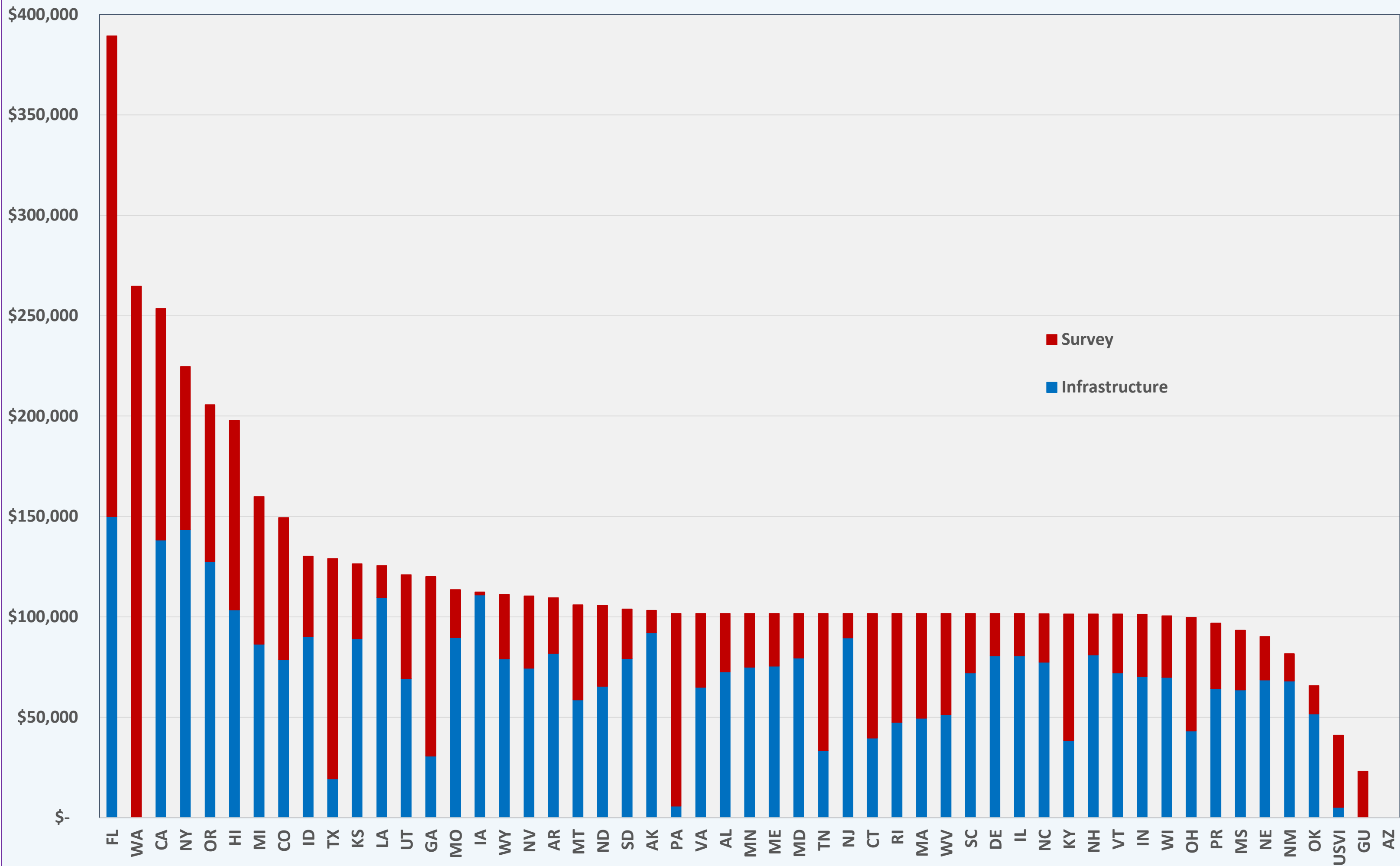
	2013		2014		2015		2016	
Priority Surveys	# States	Funding	# States	Funding	# States	Funding	# States	Funding
Corn Commodity Survey	7	\$ 164,475	6	\$ 133,384	8	\$ 222,730	9	\$ 191,755
Cotton Commodity Survey	4	\$ 77,331	4	\$ 82,147	3	\$ 67,827	3	\$ 67,666
Cyst Nematode Survey	7	\$ 136,637	3	\$ 19,586	3	\$ 20,988	2	\$ 31,074
Exotic Woodborer/Bark Beetle Su	16	\$ 418,334	19	\$ 479,587	20	\$ 537,151	21	\$ 584,205
Mollusk Survey	2	\$ 125,452	4	\$ 182,388	3	\$ 122,600	4	\$ 138,657
Oak Commodity Survey	6	\$ 191,325	5	\$ 150,439	3	\$ 80,589	4	\$ 65,722
Pine Commodity Survey	7	\$ 184,678	4	\$ 101,840	6	\$ 144,593	4	\$ 109,982
Small Grains Commodity Survey	10	\$ 221,027	7	\$ 74,000	7	\$ 110,406	11	\$ 200,365
Soybean Commodity Survey	6	\$ 69,086	9	\$ 117,200	10	\$ 148,419	9	\$ 124,417
Tropical Hosts Commodity Survey	-	\$ -	-	\$ -	-	\$ -	2	\$ 48,691

Asian Defoliators	Farm Bill-Funded Surveys
Grape Commodity Survey	Farm Bill-Funded Surveys
Palm Commodity Survey	Farm Bill-Funded Surveys
Solanaceous Crops Survey	Farm Bill-Funded Surveys
Stone Fruit Commodity Survey	Farm Bill-Funded Surveys

State Bundled Surveys	# States	Funding	# States	Funding	# States	Funding	# States	Funding
Cerceris Bio-surveillance Survey	-	\$ -	-	\$ -	1	\$ 2,053	1	\$ 2,053
Citrus Commodity Survey	1	\$ 4,650	1	\$ 6,099	1	\$ 4,600	1	\$ 5,568
Field Crops Pest Survey	1	\$ 15,500	6	\$ 142,589	2	\$ 42,406	4	\$ 80,747
Forest Pest Survey	11	\$ 308,374	10	\$ 190,793	13	\$ 319,268	17	\$ 441,861
Fruit Crops Pest Survey	-	\$ -	1	\$ 13,145	4	\$ 27,938	1	\$ 3,660
General Nematode Survey	-	\$ -	2	\$ 49,430	1	\$ 39,885	-	\$ -
Greenhouse Crops Pest Survey	1	\$ 13,648	1	\$ 12,568	1	\$ 22,770	-	\$ -
Khapra Beetle Survey	1	\$ 14,133	-	\$ -	-	\$ -	-	\$ -
Legume Survey	2	\$ 59,265	1	\$ 4,509	1	\$ 4,369	-	\$ -
Mixed Berry / Small Fruit Surve	-	\$ -	-	\$ -	-	\$ -	1	\$ 13,664
Mixed Commodity Bundled Surve	2	\$ 37,098	1	\$ 17,031	3	\$ 39,028	-	\$ -
Niger Seed Survey	-	\$ -	1	\$ 13,030	-	\$ -	-	\$ -
Nursery and Retail Plants Pest Sur	19	\$ 476,905	20	\$ 553,740	19	\$ 460,739	18	\$ 441,578
Palm Pest Survey	3	\$ 83,001	1	\$ 6,099	1	\$ 6,000	1	\$ 6,000
Pulse Crop Survey	-	\$ -	-	\$ -	-	\$ -	1	\$ 27,065
Rice Pest Survey	3	\$ 42,351	4	\$ 44,922	4	\$ 40,193	2	\$ 33,591
Root Crop Survey	1	\$ 20,066	-	\$ -	-	\$ -	-	\$ -
Solanaceous Crops Survey	-	\$ -	-	\$ -	-	\$ -	2	\$ 9,660
Tree Fruit Pest Survey	5	\$ 63,208	6	\$ 100,293	3	\$ 77,252	-	\$ -
Vegetable Crops Pest Survey	4	\$ 60,507	2	\$ 23,119	5	\$ 87,169	1	\$ 10,000

Surveys	119	\$ 2,787,051	118	\$ 2,517,938	122	\$ 2,628,973	119	\$ 2,637,981
Infrastructure		\$ 4,086,285		\$ 3,808,526		\$ 3,679,257		\$ 3,696,624
Total CAPS		\$ 6,873,336		\$ 6,326,464		\$ 6,308,230		\$ 6,334,605
Pest Detection		\$ 25,380,842		\$ 27,446,000		\$ 27,446,000		\$ 27,446,000
Percent of PD Allocation		27.08%		23.05%		22.98%		23.08%

Infrastructure and Survey Funding by State



Farm Bill Goal 1 Survey: FY10-15

FY15: as of 11/30/15 from the Farm Bill Analysis Tool
FY 13-14: as of 8/6/14 from the Master Spending Plan spreadsheets
FY10 -12: as of 8/22/14 from the Farm Bill Analysis Tool

Count = # States or # Agreements

Farm Bill Goal 1 Survey - FY10 - FY15

		FY10		FY11		FY12		FY13		FY14		FY15							
National Priority Surveys		Funding	Count	Funding	Count	Funding	Count	Funding	Count	Funding	Count	Funding	Count						
Asian Defoliator Survey		\$	545,944	4	\$	488,412	8	\$	774,719	6	\$	452,252	5	\$	900,395	8	\$	1,013,445	7
Citrus Commodity Survey					\$	259,386	8	\$	523,546	2	\$	441,744	2	\$	524,595	2			
Cyst Nematode Survey		\$	24,090	1	\$	70,026	2	\$	70,336	2	\$	397,399	8	\$	294,762	9	\$	332,387	7
EWB/BB - Forest Pests		\$	415,701	6	\$	635,000	6	\$	605,550	5	\$	571,781	9	\$	145,316	2	\$	481,297	7
Grape Commodity Survey		\$	737,714	16	\$	242,995	8	\$	358,568	11	\$	521,784	15	\$	358,436	15	\$	489,405	13
Nursery and Ornamental Survey											\$	150,000	1		\$	185,000	1		
Palm Commodity Survey					\$	350,000	5				\$	123,616	3	\$	290,625	2	\$	253,004	4
Orchard / Apple / Fruit Survey					\$	150,000	2	\$	61,350	2	\$	179,930	6	\$	233,245	8	\$	476,792	11
Pathway Survey for Pests of Multiple Agricultural Systems														\$	140,000	1	\$	261,290	2
Small Fruit / Mixed Berry Commodity Survey																	\$	154,689	5
Solanaceous/Tomato Commodity Survey					\$	677,932	9	\$	176,000	4	\$	345,360	9	\$	428,000	13	\$	587,772	12
Stone Fruit Commodity Survey		\$	613,114	23	\$	491,850	10	\$	524,142	10	\$	641,704	10	\$	317,750	12	\$	1,052,521	9
Terrestrial Mollusk Survey								\$	97,072	10	\$	34,099	1	\$	20,000	1	\$	45,914	2
Totals		\$	2,336,563	50	\$	3,365,601	58	\$	3,191,283	52	\$	3,859,669	69	\$	3,653,124	73	\$	5,333,516	80
Percent of Total G1S			17.6%	52.1%		23.2%	45.0%		21.9%	35.9%		23.5%	43.4%		22.8%	60.8%		34.5%	48.8%
Percent of Total Farm Bill			5.2%	17.8%		6.7%	16.9%		6.4%	15.1%		8.6%	17.4%		6.8%	18.9%		10.0%	18.2%
CAPS Infrastructure					\$	4,399,005		\$	4,192,768		\$	4,086,285		\$	3,808,526		\$	3,679,257	
CAPS Survey					\$	2,426,341		\$	2,650,141		\$	2,787,051		\$	2,517,938		\$	2,628,973	
CAPS Total					\$	6,825,346		\$	6,842,909		\$	6,873,336		\$	6,326,464		\$	6,308,230	
Percent of Pest Detection Allocation						25.56%			24.88%			27.08%			23.05%			22.98%	
Percent of Net to PPQ						29.86%			29.48%			32.19%			27.39%			26.86%	
Other G1S Surveys		FY10		FY11		FY12		FY13		FY14		FY15							
National Honey Bee National Survey		\$	459,157	12	\$	492,859	31	\$	493,024	31	\$	510,840	31	\$	90,616	11	\$	741,246	36
National Khapra Beetle National Survey								\$	299,000	20	\$	147,100	17	\$	18,000	3	\$	186,779	4
National Phytophthora ramorum National Survey		\$	356,073	19	\$	538,445	17	\$	445,000	11	\$	390,287	15	\$	407,326	13	\$	492,931	17
State Phytophthora Species Survey														\$	141,574	2			
State	Walnut Twig Borer/Thousand Cankers Disease Survey	\$	6,250	1	\$	251,238	13	\$	359,786	17	\$	298,912	15	\$	243,840	9	\$	323,774	9
CA	Enhanced Exotic Pests Surveys	\$	4,305,447	1	\$	6,209,058	1	\$	6,302,659	1	\$	5,810,000	1	\$	502,730	1			
CA	Asian Citrus Psyllid Survey										\$	557,159	1						
CA	Exotic Fruit Fly Survey	\$	1,991,026	1				\$	2,000,000	1	\$	1,976,000	1	\$	6,682,098	1	\$	4,000,000	1
CA	Exotic Fruit Fly Survey - PPQ CA										\$	24,000	1						
CA	False Codling Moth Survey													\$	100,000	1	\$	100,000	1
CA	Polyphagous Shot Hole Borer/Fusarium Dieback in Avocado																\$	225,000	1

Farm Bill Goal 1 Survey: FY10-15

Other G1S Surveys		FY10		FY11		FY12		FY13		FY14		FY15				
FL	Gladiolus Rust Survey							\$	40,000	1						
FL	Laurel Wilt Survey			\$	65,000	1										
FL	Exotic Psyllids and Liberibacter Species Survey						\$	67,325	1		included in Solanaceous					
FL	Marinas and Canals	\$	521,552	1												
AZ	Nut Pest Survey	\$	46,500	1	\$	75,000	1	\$	100,000	1	\$	50,000	1			
SD	Barberry Detection Survey										\$	173,000	1			
AK	Thrips Associated with Peony in Alaska						\$	17,000	1	\$	19,000	1				
HI	Biosecurity Program for Early Detection of Honey Bee Pests and Diseases						\$	72,182	1							
AR	Survey for an invasive pathogen and parasite from Arkansas honey bees												\$	40,119	1	
States	Asian Giant Hornet and Other Invasive Vespa Species Detection and Mitigation												\$	104,760	3	
UT	Bumble bee pathogen and parasite survey												\$	77,654	1	
TX	Development of Resources for Early Detection of Existing and Emerging Parasites Infesting Honey Bees in Texas												\$	40,813	1	
WA	Cherry Blossom Moth Survey						\$	36,307	1							
WA	Pacific Northwest Exotic Sawfly Survey			\$	50,000	1										
States	Viruses in Imported and Domestically Produced Ornamentals						\$	230,892	4							
TX	Crazy Ant Survey	\$	20,000	1												
CA	Duponchelia Survey	\$	9,000	1												
OR	Exotic Terrestrial Plant Pest Survey Pathway	\$	150,770	1												
NM	Pierce's disease/GWSS	\$	6,250	1												
PR	Puerto Rico Fruit Flies	\$	346,000	1												
WY	Wyoming Pest Surverys	\$	13,850	1												
NM	Firewood Survey													\$	10,000	1
CMMI	Invasive Species Survey -CNMI													\$	20,000	1
FL	Old World Bollworm Survey													\$	389,252	1
Totals		\$	8,231,875	42	\$	7,681,600	65	\$	10,423,175	90	\$	9,823,298	85	\$	8,368,975	43
														\$	7,027,328	81

Other G1S Projects		FY10		FY11		FY12		FY13		FY14		FY15							
Intergrated Plant Health Information System (IPHIS)		\$	2,116,696	1	\$	2,000,000	1	\$	500,000	1	\$	2,020,000	1	\$	2,530,000	1			
IPHIS Survey Supply Module					\$	800,000	1												
Survey Supply		\$	493,780	1	\$	327,000	1			\$	175,750	1	\$	377,500	1	\$	566,929	1	
Nut Pest Survey-Supplies										\$	5,500	1							
Honey Bee National Survey Sample Analysis		\$	105,000	1	\$	354,441	2	\$	424,423	1	\$	502,427	1	\$	270,907	1			
Honeybee Survey, coordination		\$	10,000	1															
PCN Sample Processing										\$	11,000	1							
Stone Fruit Commodity Survey Taxonomic Support/Sequencing								\$	5,000	1						\$	22,000	1	
PPV Domestic Diagnostics Support					\$	6,150	1												
CAPS Program Support																			
Totals		\$	2,725,476	4	\$	3,487,591	6	\$	929,423	3	\$	2,714,677	5	\$	4,005,442	4	\$	3,118,929	3
Total Funding and Surveys/Projects for Goal 1 Survey		\$	13,293,914	96	\$	14,534,792	129	\$	14,543,881	145	\$	16,397,644	159	\$	16,027,541	120	\$	15,479,773	164
Total Farm Bill Section 10201/10007 Funding		\$	45,000,000	281	\$	50,123,023	344	\$	50,000,000	345	\$	45,124,888	397	\$	53,899,999	387	\$	53,180,000	439
Total Pest Detection Appropriation		\$	28,113,000		\$	26,702,488		\$	27,500,000		\$	25,380,842		\$	27,446,000		\$	27,446,000	
Net to PPQ		\$	24,087,526		\$	22,859,816		\$	23,215,275		\$	21,353,782		\$	23,097,459		\$	23,484,225	

CAPS and Farm Bill Goal 1 Survey Timelines **FY2016 Funding Cycle**

