



National CAPS Committee

Des Plaines, Illinois
January 29-30, 2020

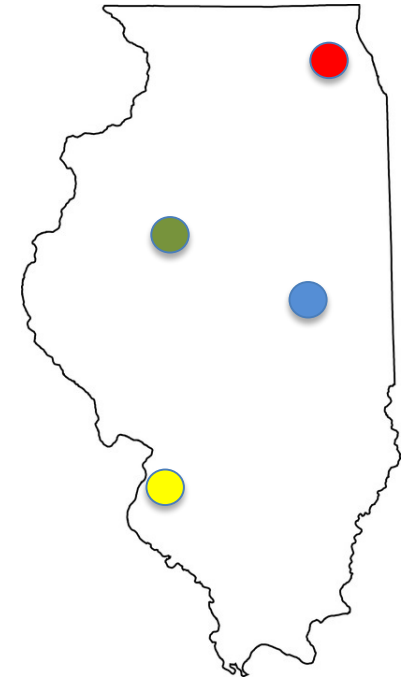
Welcome

Greg Rentschler – PPQ State Plant Health Director
Scott Schirmer – IDoA State Plant Regulatory Official

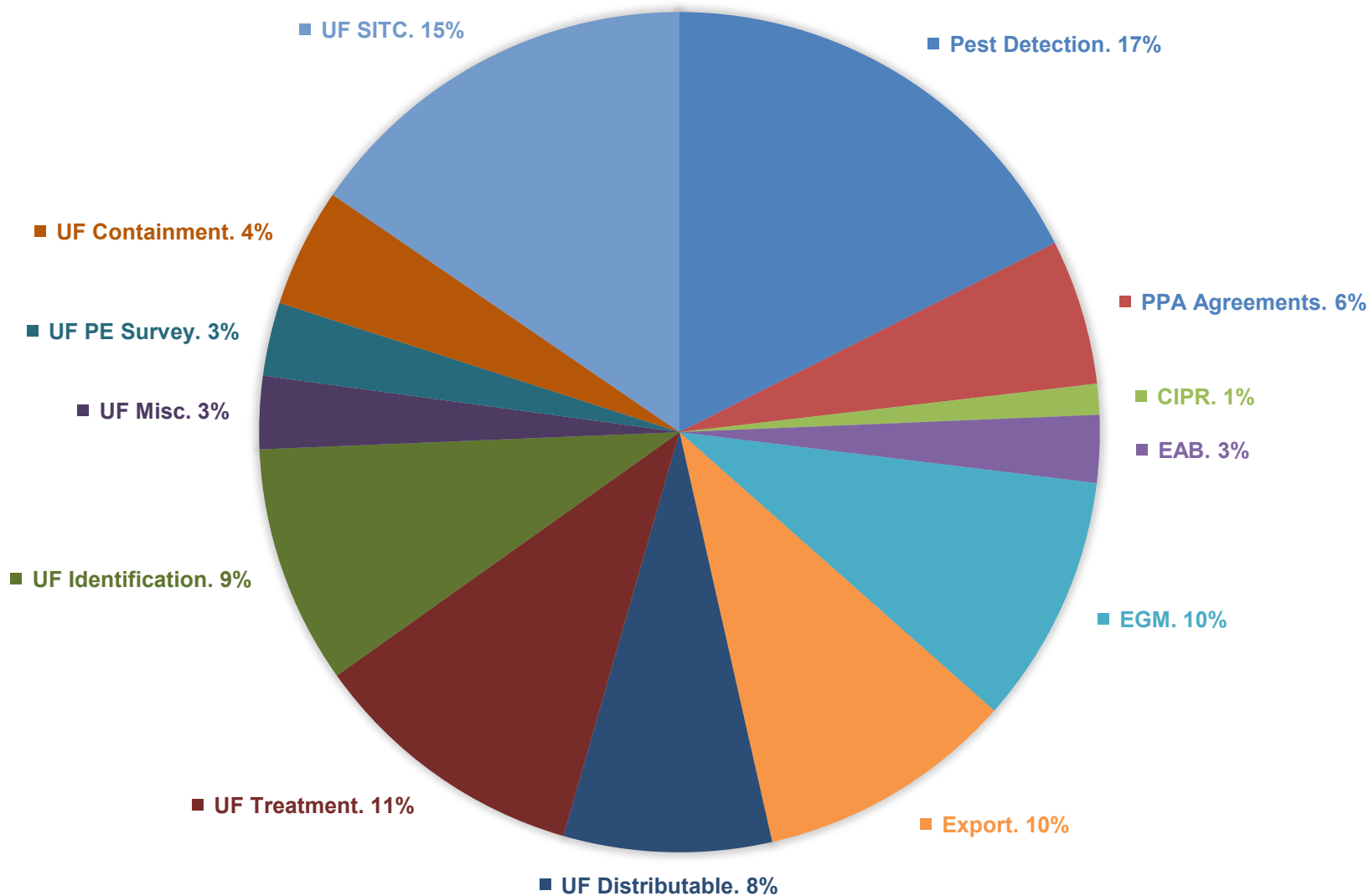
Staffing

USDA APHIS PPQ – 30 Total Staff

- Des Plaines, IL (17)
 - State Plant Health Director (SPHD)
 - 1 Office Manager (OM)
 - 1 Program Support Assistant (PSA)
 - 2 Supervisory Officers (SPPQO)
 - 3 Plant Health Safeguarding Specialists (PHSS)
 - 1 Pest Survey Specialist (PSS)
 - 3 Smuggling Interdiction Trade Compliance Officers (SITCO)
 - 2 Entomological Port Area Identifiers
 - 2 Full Time Technicians
 - 1 Seasonal Technician
- Champaign, IL (9)
 - 1 Domestic Program Coordinator (DPC)
 - 1 Plant Health Safeguarding Specialist (PHSS)
 - 7 Seasonal Technicians (GM Trappers)
- Peoria, IL (2)
 - 1 Plant Health Safeguarding Specialist (PHSS)
 - 1 Seasonal Technician
- Swansea, IL (2)
 - 2 Plant Health Safeguarding Specialists (PHSS)



USDA Staffing in IL – Program Focus Areas by Budget Line item



Staffing

IDoA – Bureau of Environmental Programs

- Bureau Chief –Springfield
- 1 executive assistant
- Nurseries and Northern Field Operations Manager, State Plant Regulatory Official (SPRO) – DeKalb
- 10 nursery inspectors – 2 vacant
- 2 export certification specialists
- 1 gypsy moth program manager
- 1 DDG export inspector
- 2 office associates
- Downstate Field Operations Manager – Springfield
- 8 nursery inspectors – 1 vacant
- 1 office associate
- Certification, Licensing, and Registration Section Manager – Springfield
- 2 office associates

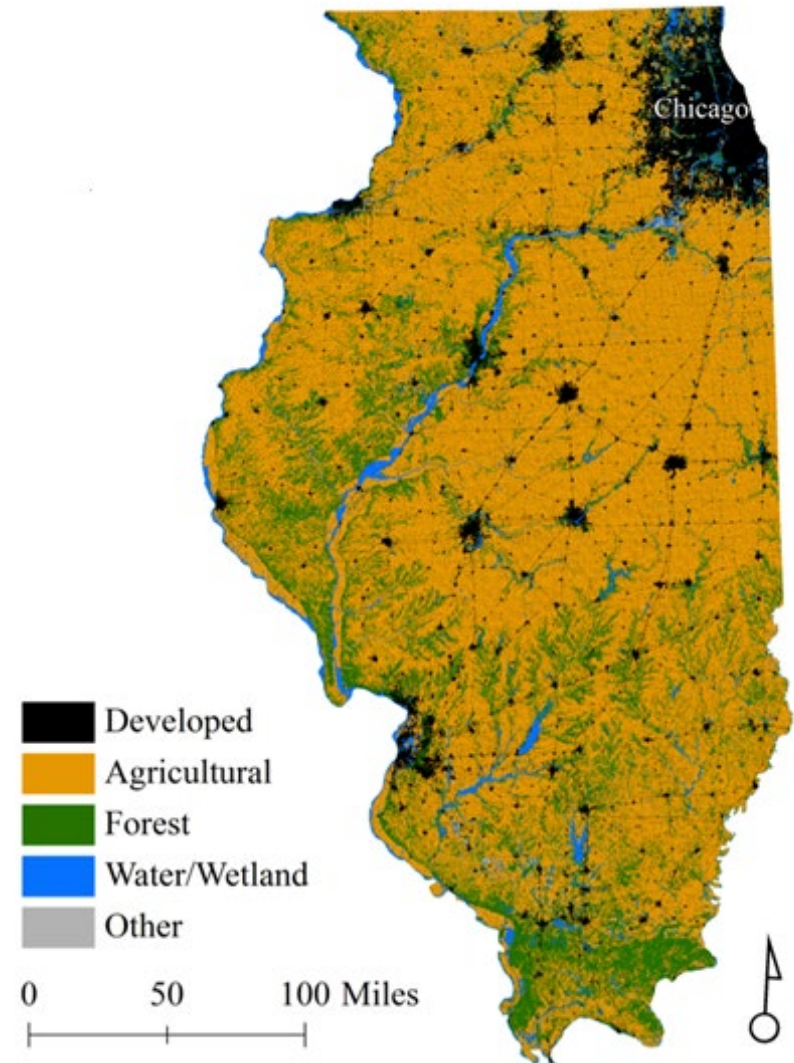
IDoA – Bureau of Environmental Programs

Program Focus Areas

- **Nurseries and dealer inspections**
 - -491 licensed nurseries in 2019, 440 inspected in 2019 for 2020 licensure (207 GM compliant)
 - -21,200 acres inspected
 - -3243 registered dealers in 2019, 3250 in 2020 (55 GM compliant)
 - 27 certified shipping greenhouses
 - 150 registered Xmas tree dealers
- **Phytosanitary/Export certification**
 - 2019 – 4313 577s, 298 578s, 78 579s, 139 state
 - 2020 (YTD) – 290 577s, 17 578s, 2 579s, 8 state
- **Emergency and Invasive Species Response Programs**
 - Administer gypsy moth program (trapping, treatment, regulatory)
 - TF/TB efforts (SOD, boxwood blight, EHS)
 - Cooperative response survey efforts (XVV, T. setosus, ToBRFV)
 - TCD compliance
- **Pesticide Regulations and Enforcement**

Illinois Agriculture

- Illinois farmland covers nearly 27 million acres -72,500 farms- about 75 percent of the state's total land area.
 - Leading producer (1st/2nd) of soybeans and corn, and (4th) swine.
 - First in ethanol production, and pumpkins and horseradish.
- Marketing of Illinois' agricultural commodities generates more than \$19 billion annually.
 - Illinois ranks third nationally in the export of agricultural commodities with \$8.2 billion worth of goods shipped to other countries.
 - Approximately 44 percent of grain produced in Illinois is sold for export.



Export Certifications

Federal Certificate Summary % Change (2014-2018)

Duty Station Type	2014	2015		2016		2017		2018	
	Count	Count	% ±	Count	% ±	Count	% ±	Count	% ±
PPQ	13,786	10,180	-26%	8,628	-15%	7,930	-9%	12,910	+63%
State	5,976	5,420	-9%	5,824	+7%	6,574	+6%	7,968	+21%
Combined	19, 762	15,600	-21%	14,482	-7%	14,504	0%	20,878	+44%



The Leading Commodities IL Certified for Export in 2018

Commodity	Commodity Form
Corn	Grain, Seed, Popcorn, Milled Products, Feed [Distillers Dried Grain: DDG
Soybeans	Grain, Seed, Milled Products, Feed
Wood	Logs, Lumber, Wood chips
Misc. Seeds	>300 species of seed for propagation
Plants	176 species of Nursery Stock, Greenhouse plants, Cuttings, Trees, In-vitro Plantlets
Fruit	6 species of Dried Fruit & 2 species of Frozen Fruit



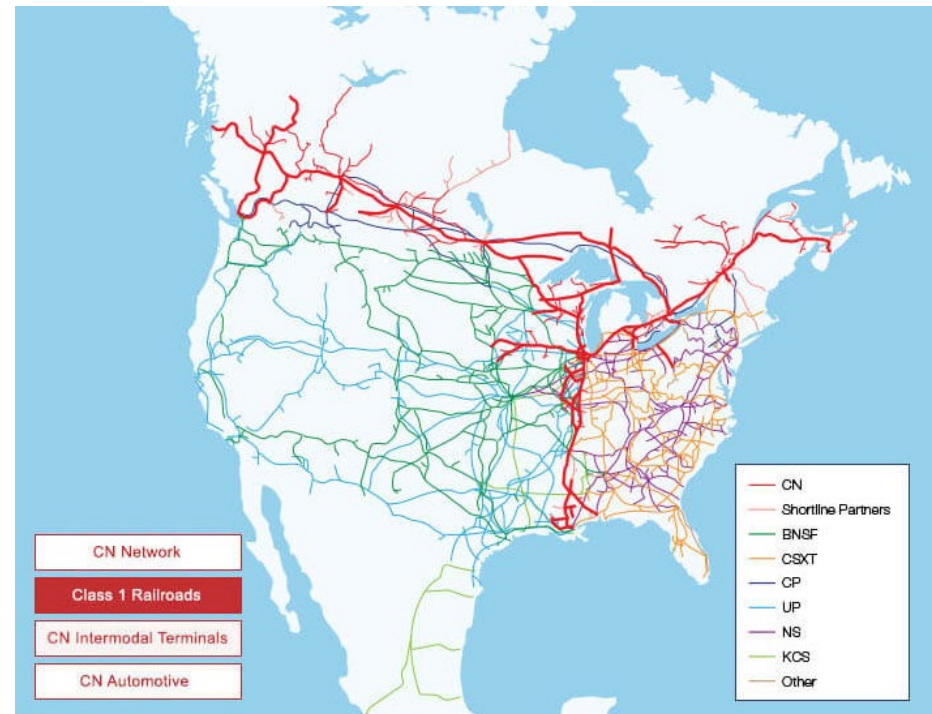
Top Countries Receiving IL Exports (PC Counts)

2018 Rank	Country	2018 Total Certificates	2017 Rank	2016 Rank
1	Indonesia	3,676	1	2
2	Taiwan	3,574	2	3
3	Viet Nam	3,313	6	4
4	Thailand	1,919	5	5
5	China	1,302	4	1
6	Korea, Republic of	1,216	7	6



Illinois – The National Cargo Crossroads

- Superior highway, rail, waterways and air transportation assets
- Largest inland general cargo port in America
- Import/Export Midwest Hub



Customs & Border Protection Agriculture



Quarterly PRC Meetings

- Sharing of risk information
 - Passenger Operations
 - Cargo Operations
 - SITC and Pest Detection Reports
- Discuss workflows
 - Identifications
 - Fumigations
 - Regulated garbage



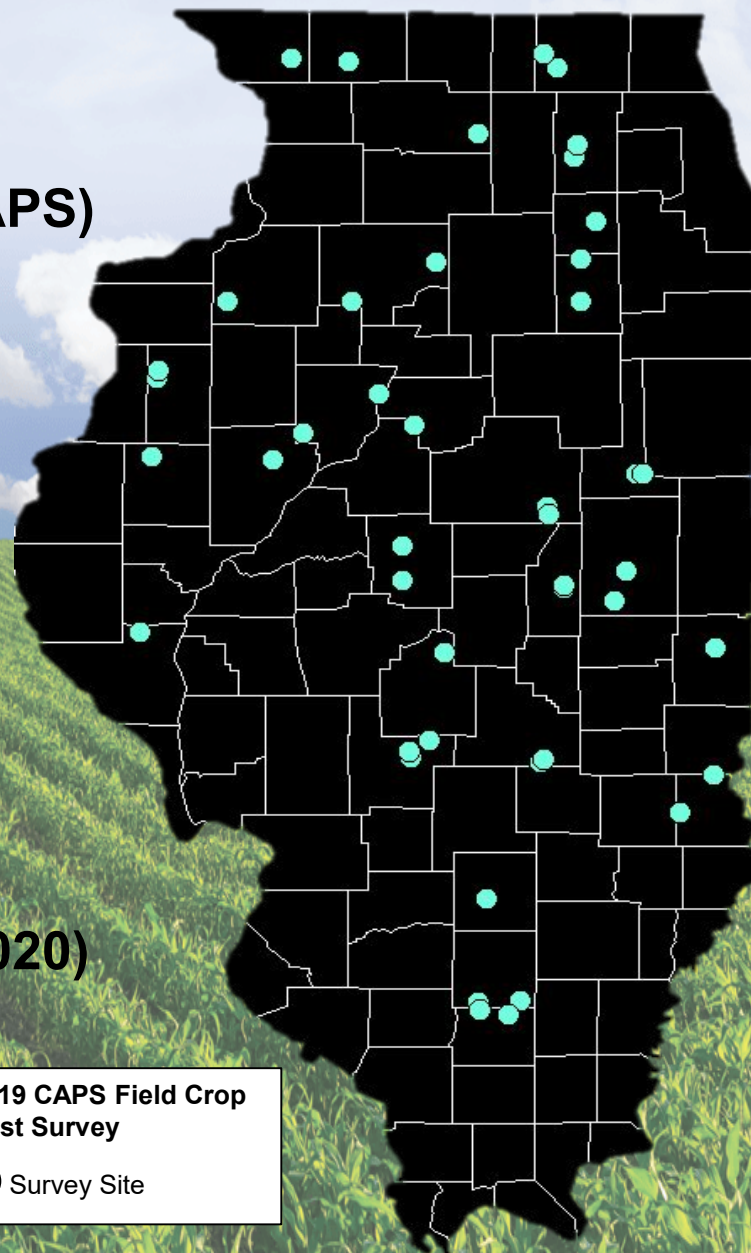
IL Partners

- USDA APHIS PPQ
- Illinois Department of Agriculture
- University of Illinois
 - Natural History Survey
 - Extension
 - Plant Clinic
- The Morton Arboretum
- DHS Customs & Border Protection
- City of Chicago Forestry
- County Forest Preserves
- State Pest Analysis of Risk Committee (SPARC)



IDoA Surveys

- **Cooperative Agricultural Pest Survey (CAPS)**
 - **Field Crop Pest Survey (Corn and Soybean)**
 - Seven targeted pests
 - Trapping and visual survey in 25 counties
- **PPA Surveys (2019- 2020)**
 - Grape Commodity Survey
 - Plum Pox Survey
 - Asian Defoliator
 - Agricultural Pest Pathways Survey (2020)
 - Asian Defoliator (2020)



PPQ Pest Detection Surveys in IL

- Exotic Bark & Woodboring Beetle Survey
 - High-risk pathways
- Cerckeris Biosurveilnace
- Cut Flower Survey
- Asian Gypsy Moth
- Khapra beetle

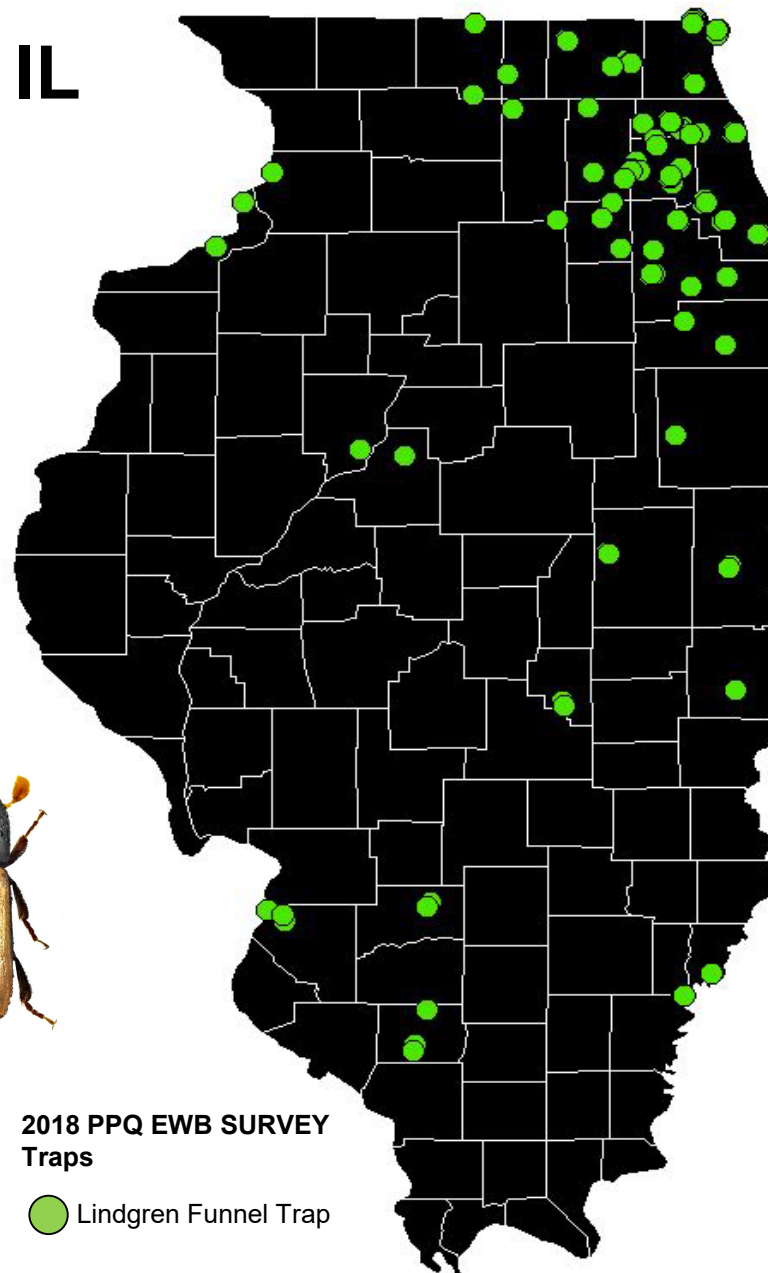


Autographa gamma



2018 PPQ EWB SURVEY
Traps

Lindgren Funnel Trap



On the Horizon



Ongoing monitoring for spotted lanternfly

Illinois Spotted Lanternfly Early Detection Rapid Response Plan

Created: 3/28/19, Updated 4/29/2019

Background

Spotted Lanternfly (SLF), *Lycorma delicatula*, was initially found in Berks County, Pennsylvania (PA) in 2014. Since that time, it has spread rapidly among 13 counties within the state (now under quarantine) and has been detected in 4 additional states, including New York, New Jersey, Virginia, and Delaware. Knowledge of the host range and potential impacts of SLF in the United States continues to evolve and expand. This plant hopper is known to be an important pest of grapes, fruit trees, and hops. SLF is also proving to be an extreme nuisance pest in urban areas, and concerns are rising regarding forest health impacts through feeding on hardwood species such as black walnut, a high value commodity in Illinois. Due to these broad impacts on agricultural production, forestry and quality of life, SLF is considered a top priority pest of concern in Illinois.

Illinois Pathways

The two highest risk pathways for introduction of the SLF are:

1. Human assisted egg mass transportation from the current PA infested area into Illinois, and
2. New introduction of egg masses into Illinois via a high volume of high risk material imported from China/Korea.

See Appendix A & D for more detail on risk analysis for Illinois.

Resources at Risk in Illinois

The SLF is a threat to natural, urban, and agricultural settings. Although the SLF is polyphagous in the larval stage, adults prefer *Ailanthus altissima* (Tree of Heaven, ToH) and *Vitis spp.* (Grapes) for feeding, egg laying, and overwintering. The grape and winery industry in Illinois is growing and economically important. The SLF is reported to cause very serious damage on *Juglans mandshurica* (Manchurian walnut) in its native range, hence the increasing concern of the threat SLF poses to the Eastern Black Walnut (*Juglans nigra*) timber industry in Illinois.

ToH is widely distributed throughout Illinois and has become an invasive tree in natural and urban areas. As the preferred host for SLF, and its presence along high risk pathways and industrial areas, the ToH can be used as a sentinel plant indicator, primary survey target for SLF presence, and control measure (eradication through removal of host).

Scope and Purpose

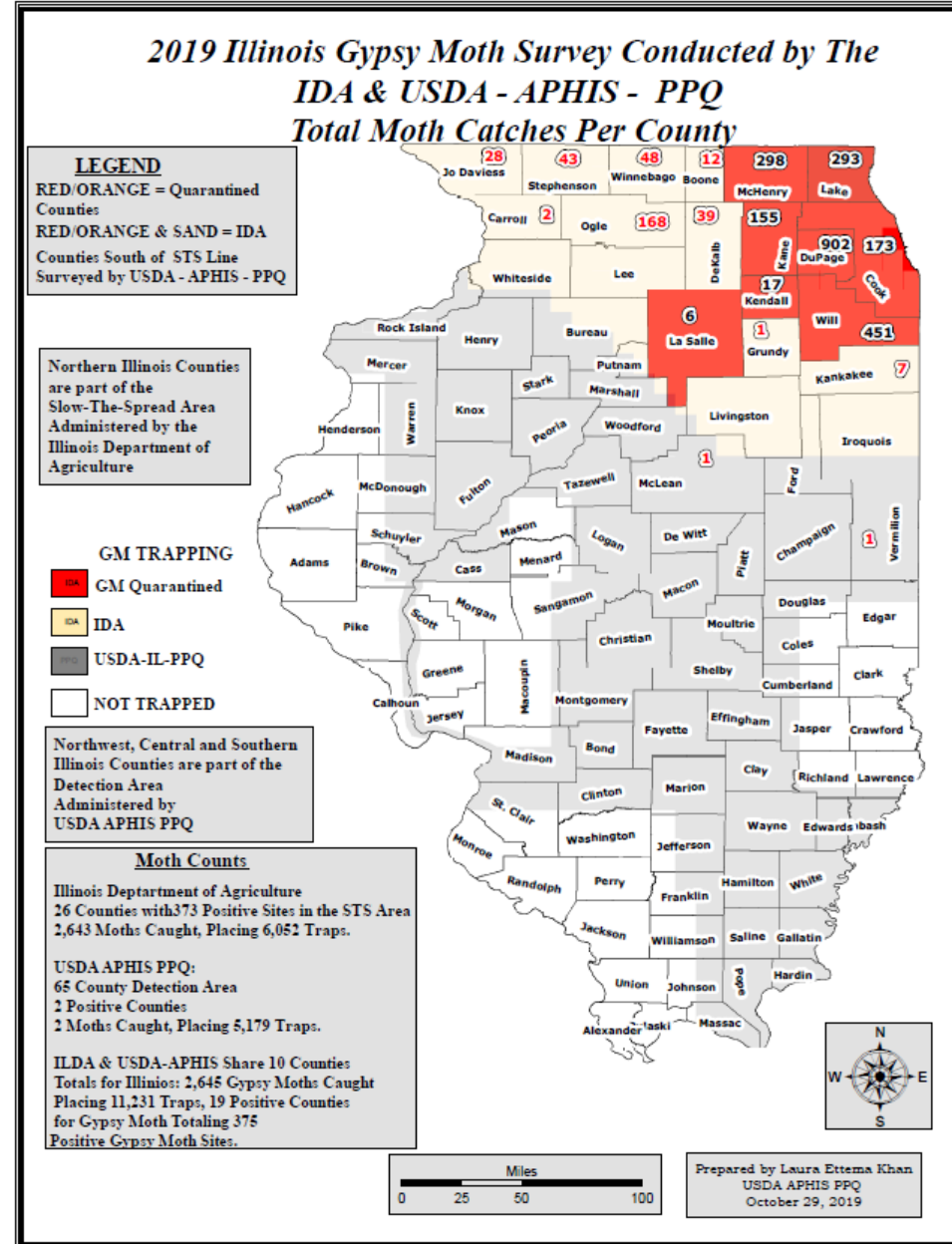
European Gypsy Moth

- Regulatory
- Survey
- Treatments
- Outreach



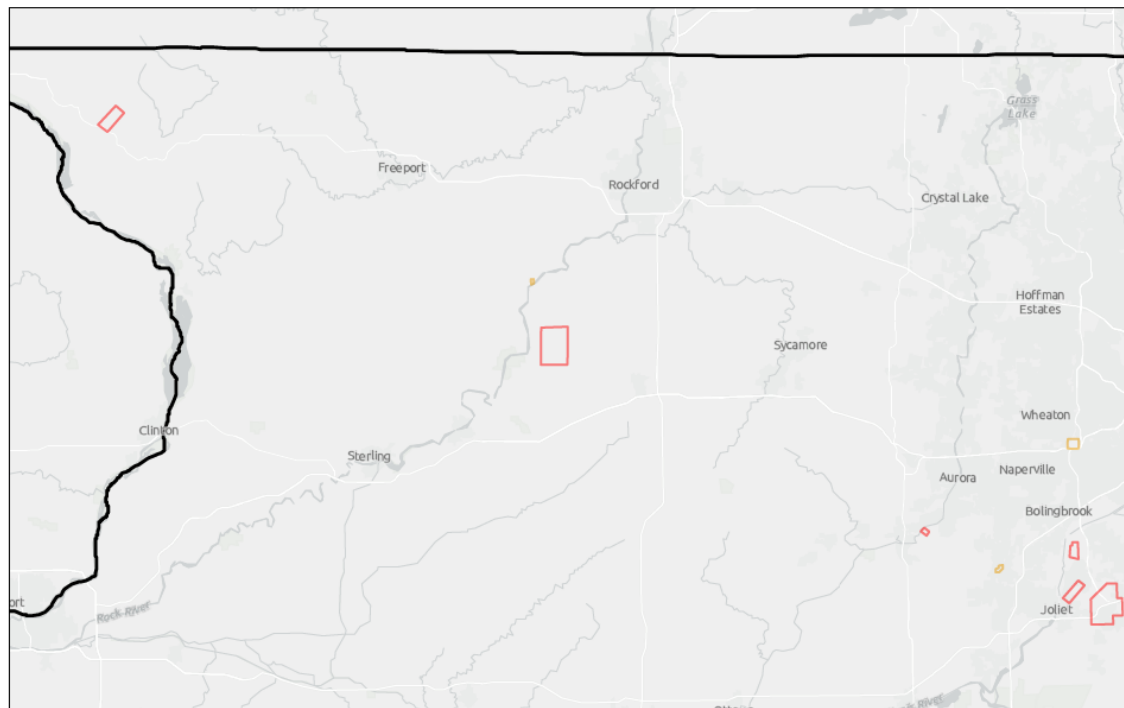
Partnership:

- USDA APHIS PPQ
- Illinois Department of Agriculture
- US Forest Service



2020 GM Aerial Application Program

Gypsy Moth STS Treatment Planning V2



1/23/2020, 11:49:09 AM

Treatments MD States

 Btk; Btk-MD

1:1,155,581
0 5 10 20 mi
0 10 20 40 km
Sources: Esri, HERE, Garmin, FAO, NOAA, USGS, © OpenStreetMap

Esri, HERE, Garmin, FAO, METINASA, USGS, EPA, NPS | Esri, HERE, Garmin, FAO, METINASA, USGS, EPA, NPS |



Tale of Two Beetles

Asian Longhorned Beetle



- Initial IL detection 1998
- Strong partnerships
- Aggressive tree removal (over 1700) and treatment plan.
- Last detection was in 2003.
- Eradication declared 2008



Emerald Ash Borer



- Initial IL detection 2006
- Despite strong partnerships, a losing battle which continues to spread.
- Internal Quarantine removed 2015. Entire state federally quarantined.
- Current work is regulatory only pending de-regulation
- Heat Treatment compliance agreements
- Biocontrol focus, shows promise