

Plastic Bucket Trap Protocol

The plastic bucket trap is a long-lasting insect trap used in conjunction with a lure to monitor or detect various species of moths. The plastic bucket trap is the preferred trap for some moth species since it can catch large numbers of moths without damaging some of their identifying characters. The trap has four parts: 1) lid, 2) lure basket with cap, 3) funnel, and 4) bucket. The trap is available in various color combinations; however, two are offered by PPQ: 1) the tri-colored bucket trap (consisting of a green lid, yellow funnel, and white bucket) and the all-green bucket trap. **Figure 1** is a photograph of a tri-colored bucket trap cut in half.

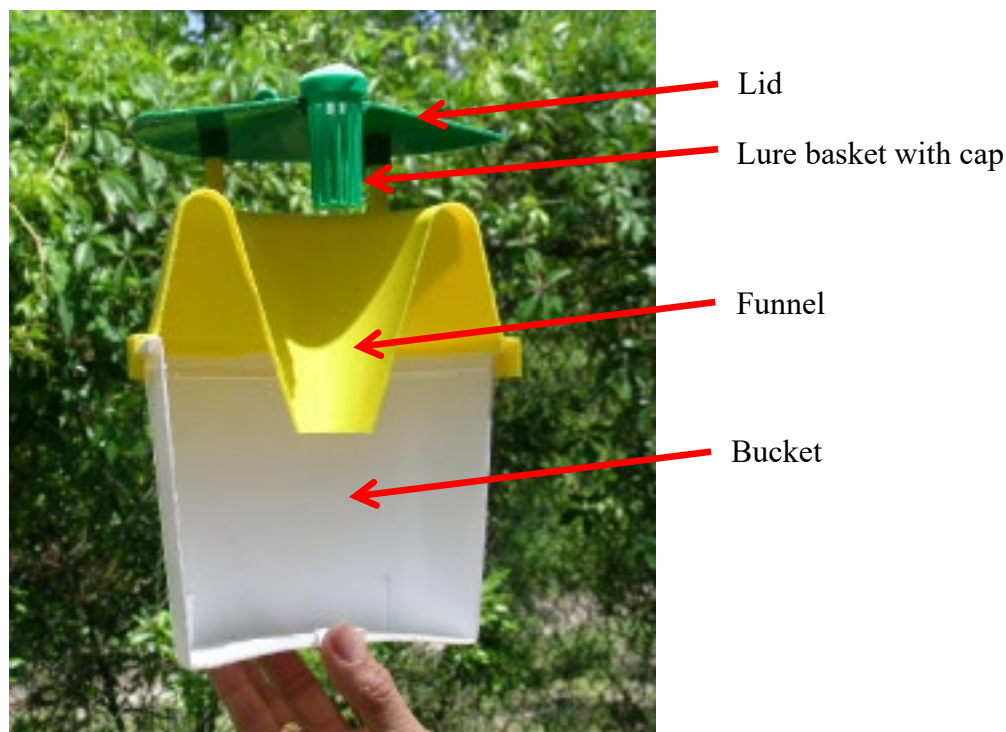


Figure 1. Plastic bucket trap cut in half to show its interior

Follow the steps below to prepare the bucket traps for use in the field:

1. Pheromone

The synthetic pheromone is embedded in a laminate (a small, rubberized square as in **Figure 2**) or a septum (similar to a pencil eraser as in **Figure 3**) dispenser. Use gloves when handling lures and unwrap the lure from its packaging. When not in use, the lures should be stored in a freezer not used for food or drinks. Refer to pheromone Safety Data Sheet documents for storage and safety information.

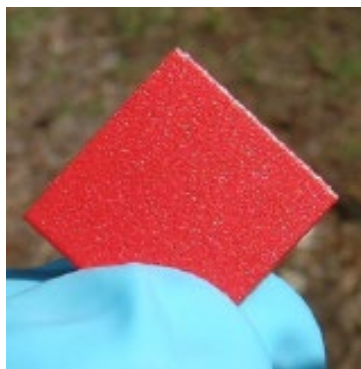


Figure 2. Laminate lure



Figure 3. Septum lure

If you are using a laminate lure, you may attach the lure to a small paper clip and fold the clip so that the lure does not fall out of the basket (**Figures 4 and 5**).



Figure 4. Laminate lure in paper clip



Figure 5. Laminate lure in paper clip inside lure basket

If you are using a septum lure, place the septum inside the lure basket (**Figure 6**). Cover the basket with the lid and insert the basket through the circular opening on the center of the lid (**Figure 7**). If the cap no longer snaps snugly into the trap lid opening, secure it with a piece of tape.



Figure 6. Septum lure inside lure basket

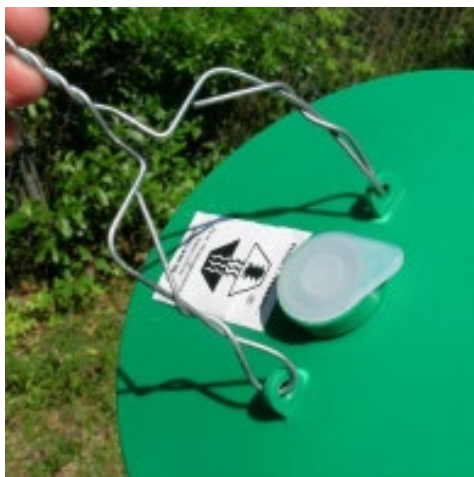


Figure 7. Lure basket with cap inserted through center of lid

Note: To avoid cross-contamination from lure residue, do not reuse lure baskets for different species. Label the lure basket with the name of the moth species it was used for.

2. Handle

Attach a wire handle to the lid through its two loops, as shown in **Figures 8 and 9**. A wire handle is usually included with each trap. If a handle is not included or needs to be replaced, make one with a 12-inch long wire. You can also use string, but it does not last as long as the wire.



Figures 8 and 9. Wire handle attached to trap lid

3. Trap Modifications to Improve Moth Specimen Quality

There are two trap modifications that may be used to improve moth specimen quality. In regions where little or no rain is expected, a sponge can be used to soak up small quantities of water (see **3a** - Sponge). This method does not require modifications to the trap. In regions where there is the possibility for significant rain, holes can be drilled into the bottom of the trap to allow for water to escape (see **3b** - Drain holes and wire screen). Surveyors are encouraged to use whichever method provides the highest quality moth specimens in their state's unique weather conditions.

3a. Sponge

Place a dry cellulose sponge in the bottom of the trap, as shown in **Figure 10**. The sponge will absorb rainwater (except for extremely heavy amounts) that may enter the trap, keeping the moths somewhat dry. Sponges should be purchased locally. Purchase sponges without additives such as antibiotics or fragrances.

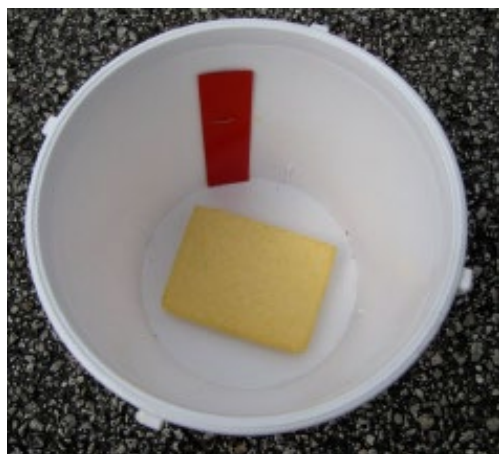


Figure 10. Cellulose sponge (yellow) and insecticide strip (red) inside the trap



Figure 11. Bucket with five holes drilled in the bottom

3b. Drain holes and wire screen

Drain holes: Use a 3/16-inch drill bit to drill four to five holes in the bottom of the bucket to allow excess rainwater to drain (**Figure 11**). Holes should be drilled around the outer edge of the bucket to allow for proper drainage.

Wire mesh screen: Five-inch diameter wire mesh screens are available from the Survey Supply Ordering System in IPHIS, Product ID 1381 (**Figure 12**). The wire mesh screen is placed in the bottom of the bucket trap to keep the moths from getting too wet from rainwater accumulated in the trap. When placed in the bucket trap, the screen is approximately one inch from the bottom of the bucket (**Figure 13**).

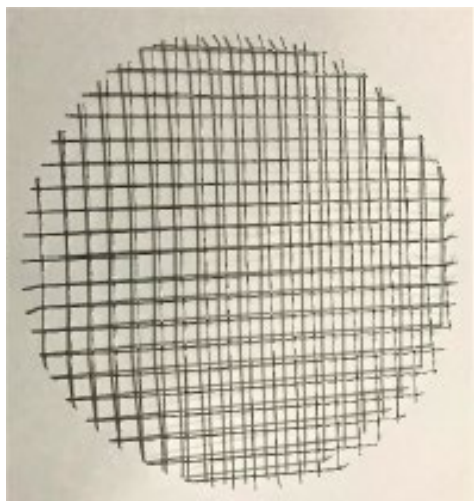


Figure 12. 5-inch diameter wire mesh screen



Figure 13. Wire mesh screen in bucket

Moving or handling the trap may cause the screen to tilt and allow specimens to fall below the screen. To improve the stability of the wire screen mesh use four #8 x $\frac{3}{4}$ -inch machine screws placed equally distance around the trap and 1-inch from the bottom of the plastic bucket (Tip: Use the small tabs on the inside of the bucket as a guide for placing screws 1-inch from bottom) (**Figures 14 and 15**). The use of screws allows for the easy removal of the wire mesh screen to collect specimens that may fall below (**Figure 16**).



Figure 14. Machine screws placed equal distance from each other and around the bucket trap (inside)



Figure 15. Machine screws shown one inch from the bottom of the bucket trap (outside)



Figure 16. Wire mesh screen placed on machine screws inside bucket trap

4. Insecticidal Strips

Insecticidal strips (**Figure 17**) are placed in traps so that captured moths are killed quickly. This step is important for preserving specimen quality. The active ingredient in the strips is Dichlorvos, also known as DDVP and Vapona. The strip may be placed in the trap by 1) attaching it to the side of the trap (as seen in **Figure 10**), or 2) placing it in the bottom of the trap or on top of the screen (if using the wire mesh screen modification).



Figure 17. Insecticide strip

Note: The strip should be handled with gloves. Refer to the MSDS document for this product for safety information. Store unopened strips in a freezer that is not used for food or drink.

The CAPS program has listed a conservative length of effectiveness of 8 weeks for the insecticidal strips. The manufacturers of insecticidal strips list an effectiveness of 12 weeks. Rain, wind, high heat, and large numbers of moths may reduce the potency of the insecticidal strips. Use the 8-week interval as a starting point, but you may change the interval (not to exceed

12 weeks) based on your state's weather. If you find that moths are badly damaged (indicating they were not killed quickly), you should change the strips more frequently. In very hot and/or humid environments, it may be necessary to use two insecticidal strips, especially if traps are catching large quantities of moths.

5. Label the Trap

Attach a rain-proof printed label (**Figure 18**) or handwrite a note with a water-proof black marker on the bucket trap. It should indicate that the trap belongs to a state or a PPQ program. Include a phone number in case someone has concerns or questions about the trap.



Figure 18. Label on the trap lid



Figure 19. Trap set in open field and away from foliage

6. Placement of Traps

The traps function best when placed in the open, away from foliage, as illustrated in **Figure 19**. When hung under foliage, the three-dimensional shape of the pheromone plume (chemical in the air) is disrupted and the effectiveness of the trap is reduced. Hang the traps from places such as greenhouse roofs or in the open using metal rods (see **Figure 19**) or other materials.

7. Trap Servicing

In the field, transfer the caught moths to labeled paper sample envelopes and store them in a cooler (**Figures 20 and 21**). Place them in a freezer overnight to kill any surviving specimens. Prior to screening, specimens can be stored in the freezer or in a cardboard box at room temperature.

Note: Do not place samples in airtight containers, like plastic bags. The moths will rot, quickly degrading specimen quality and making identification difficult or impossible.



Figure 20. Moths placed in paper envelope



Figure 21. Moths stored in cooler

8. Sample Submission

Screen samples prior to shipping. Remove any moths vastly different from the target moth and all other arthropods (beetles, flies, spiders). Write the approximate number of moths being submitted on the PPQ Form 391. See Specimen Submission Guidance for Lepidoptera for instructions on preparing and submitting samples.



Figure 22. Examples of small envelopes for shipping specimens

Tip: The ideal envelopes for shipping samples are 3 ½ x 6 ½ inches and are commonly referred to as “coin envelopes” in office supply stores (**Figure 22**). Smaller or larger envelopes are acceptable as well.

9. Trap Maintenance and Storage

The general recommendation for maintenance of the plastic bucket traps is to wash them occasionally with soap and water to keep them clean, and to store them indoors, or at least protected from sun, rain, and dust. Keep the wire handle and the wire screen in good condition. The traps can be used multiple times and for multiple species since the chemicals degrade quickly in outdoor conditions. These traps usually last more than five years.

Acknowledgments

This protocol has been designed to aid in the detection of exotic moths of concern by giving instructions on how to use generic plastic bucket traps. Photographs for Figures 1-10, 17-19 and 21-22 were taken by J. Brambila; trapping materials were supplied by R. Meagher. These instructions are primarily based on work by R. Meagher.

This aid was originally prepared by Julieta Brambila, Lisa Jackson (USDA APHIS PPQ), and Robert L. Meagher (USDA ARS CMAVE) on April 2010.

This aid has been revised since October 10, 2014 by Julieta Brambila, Lisa Jackson, Douglas Restom Gaskill, Andrew Derksen (USDA APHIS PPQ), and Robert L. Meagher (USDA ARS SEA). Changes include:

- In the Pheromone section, added an image of the septum lure. Also added images on how to secure laminate lures into lure baskets with a paper clip.
- In the Pheromone section, added instructions on labeling lure baskets to avoid cross-contamination from lure residue.
- In the Trap Modification section, noted that the sponge method may be easier and more effective than the screen method.
- In the Insecticidal strips, changed the recommended number of insecticidal strips to use in the trap from two to one.
- Changed the length of effectiveness of the insecticidal strips from 1 to 4 weeks to 8 weeks as a starting point; encourage states to evaluate what is effective in their local weather conditions.
- Added information on differing lengths of effectiveness of the insecticidal strips, depending on weather.
- In the Sample submission section, added two sample submission methods: sending moths in small envelopes or small boxes.
- In the Sample submission section, added images of the small manila envelopes.

Additional revisions made in June 2025 to comply with Administration Executive Orders.